

30-1432: Anti-LIME Monoclonal Antibody (Clone:mLIME-05)

Clonality :	Monoclonal
Clone Name :	mLIME-05
Application :	IP, WB
Reactivity :	Mouse
Format :	Purified
Isotype :	Mouse IgG2a
Immunogen Information :	Recombinant protein corresponding to amino acids 86-202 of mouse LIME

Description

LIME (Lck-interacting molecule) is a 30 kDa double-palmitoylated protein with unusually basic cytoplasmic domain, expressed by T cells. After ligation of CD4 or CD8 T cell coreceptors, LIME is phosphorylated by Src-family kinases and associates with Lck and Fyn kinases and with their negative regulator Csk. Interestingly, Csk-mediated phosphorylation of C-terminal negative-regulatory tyrosine of LIME-associated Lck can result in increase of enzymatic activity compared with the total pool of Lck, thus, LIME serves as a positive regulator of TCR-dependent T cell signaling. However, under some circumstances, LIME may mediate inhibitory signals.

Product Info

Amount :	0.1 mg
Purification :	Purified by protein-A affinity chromatography
Storage condition :	Store at 2-8°C. Do not freeze.

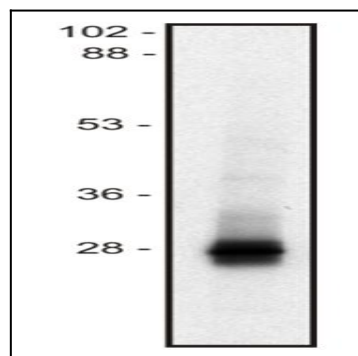


Figure 1: Western blot of mouse thymocyte lysate (1% SDS); non-reduced sample, immunostained by mAb mLIME-05 and goat anti-mouse IgG (H+L)-HRP conjugate.