

### 30-2049: FITC Conjugated Anti-Ly6G Monoclonal Antibody (Clone:RB6-8C5)

<b>Clonality :</b>	Monoclonal
<b>Clone Name :</b>	RB6-8C5
<b>Application :</b>	FACS
<b>Reactivity :</b>	Mouse
<b>Conjugate :</b>	FITC
<b>Gene :</b>	Ly6g
<b>Gene ID :</b>	70274
<b>Uniprot ID :</b>	P35461
<b>Alternative Name :</b>	Ly-6G.1
<b>Isotype :</b>	Rat IgG2b
<b>Immunogen Information :</b>	Murine granulocytes

#### Description

Ly6G is a component of the myeloid differentiation antigen Gr-1, together with Ly6C. Ly6G is a good marker for detection of peripheral neutrophils. Expression of Gr-1 in bone marrow correlates with granulocyte differentiation and maturation. Physiological role of Ly6G remains still unclear. Its treatment with antibodies in vivo leads to neutropenia and has inhibitory effect on local immune responses.

#### Product Info

<b>Amount :</b>	0.1 mg
<b>Storage condition :</b>	Store in the dark at 2-8°C. Do not freeze. Avoid prolonged exposure to light.

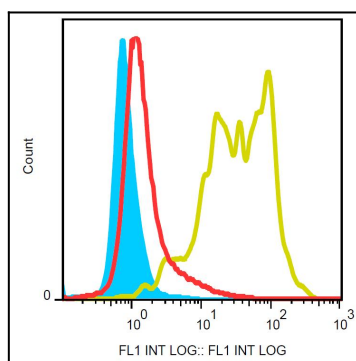


Figure 1: Surface staining of murine splenocytes with anti-Ly-6G (RB6-8C5) FITC.