

### 30-1459: Anti-Notch 1 Monoclonal Antibody (Clone:mN1A)

<b>Clonality :</b>	Monoclonal
<b>Clone Name :</b>	mN1A
<b>Application :</b>	FACS
<b>Reactivity :</b>	Human
<b>Gene :</b>	Notch1
<b>Gene ID :</b>	18128
<b>Uniprot ID :</b>	Q01705
<b>Format :</b>	Purified
<b>Alternative Name :</b>	NOTCH1, TAN1, Motch A, mT14, p300
<b>Isotype :</b>	Mouse IgG1
<b>Immunogen Information :</b>	GST fusion protein containing cdc10-NCR region of mouse Notch1

#### Description

Notch 1 is a 270-300 kDa transmembrane heterodimeric protein with multiple extracellular growth factor-like repeats, and with an intracellular domain consisting of multiple different domain types. It serves as a receptor for membrane ligands, such as Delta 1, Jagged1 (CD339), and Jagged2, and regulates cell fate decisions. Upon ligand binding the transmembrane form of Notch 1 is repeatedly cleaved to provide approximately 120 kDa Notch intracellular fragment (NICD), which translocates to the nucleus and acts as a part of transcriptional complexes that alter differentiation, proliferation, and apoptosis. The highest level of Notch 1 expression is in brain, lung and thymus.

#### Product Info

<b>Amount :</b>	0.1 mg
<b>Purification :</b>	Purified by protein-A affinity chromatography
<b>Storage condition :</b>	Store at 2-8°C. Do not freeze.

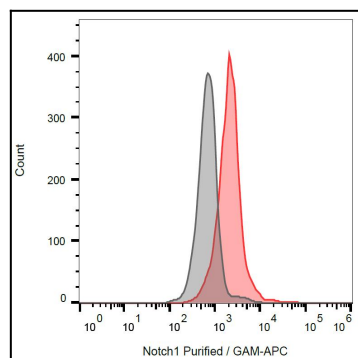


Figure 1: Intracellular staining of Notch1 in Jurkat cells using anti-Notch1 (mN1A) purified.