

### 30-1339: Anti-NTAL / LAB Polyclonal Antibody(Discontinued)

<b>Clonality :</b>	Polyclonal
<b>Application :</b>	WB, IHC
<b>Reactivity :</b>	Human
<b>Gene :</b>	LAT2
<b>Gene ID :</b>	7462
<b>Uniprot ID :</b>	Q9GZY6
<b>Format :</b>	Purified
<b>Alternative Name :</b>	LAT2,LAB,NTAL,WBS15,WBSCR15,WBSCR5,HSPC046
<b>Isotype :</b>	Rabbit IgG
<b>Immunogen Information :</b>	Recombinant cytoplasmic domain (aa 91-243) of human NTAL.

#### Description

NTAL (Non-T cell activation linker), also known as LAB (Linker for activation of B cells), is a 30 kDa double-palmitoylated transmembrane adaptor protein expressed by B cells, NK cells, mast cells and macrophages. It is a negative regulator of early stages of BCR-dependent B cell signaling and serves as a negative regulator also in mast cells. However, in mast cells, NTAL also contributes to some activation processes, partially overlapping with LAT function.

#### Product Info

<b>Amount :</b>	0.1 mg
<b>Purification :</b>	Purified from rabbit serum by affinity chromatography
<b>Storage condition :</b>	Store at 2-8°C. Do not freeze.

#### Application Note

**Western Blotting** *Recommended dilution:* 1 µg/ml **Immunohistochemistry**

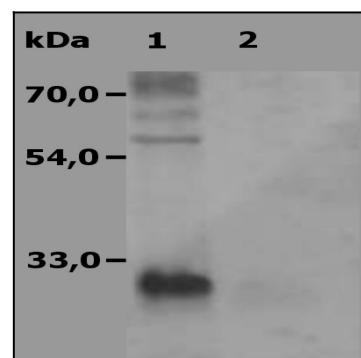


Figure 1: Western Blotting analysis (non-reducing conditions) of NTAL-transfected HEK-293 FT cells using polyclonal anti-human NTAL antibody. Lane 1: cell lysate of transfected HEK-293 FT cells. Lane 2: cell lysate of non-transfected HEK-293 FT cells (negative control)

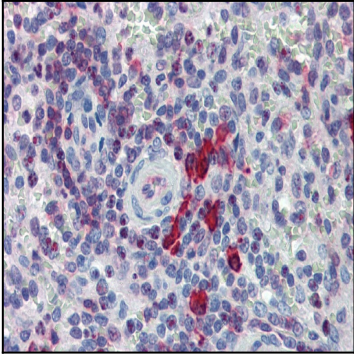


Figure 2: Immunohistochemistry staining of human spleen (paraffin sections) with anti-NTAL polyclonal.