

## 30-1340: Anti-NTAL / LAB Polyclonal Antibody

|                                |   |
|--------------------------------|---|
| <b>Clonality :</b>             | Polyclonal  |
| <b>Application :</b>           | WB  |
| <b>Reactivity :</b>            | Mouse   |
| <b>Format :</b>                | Purified  |
| <b>Isotype :</b>               | Rabbit IgG  |
| <b>Immunogen Information :</b> | Recombinant N-terminal cytoplasmic domain (aa 124-203) of mouse NTAL. |

### Description

NTAL (Non-T cell activation linker), also known as LAB (Linker for activation of B cells), is a 30 kDa double-palmitoylated transmembrane adaptor protein expressed by B cells, NK cells, mast cells and macrophages. It is a negative regulator of early stages of BCR-dependent B cell signaling and serves as a negative regulator also in mast cells. However, in mast cells, NTAL also contributes to some activation processes, partially overlapping with LAT function.

### Product Info

|                            |   |
|----------------------------|---|
| <b>Amount :</b>            | 0.1 mg  |
| <b>Purification :</b>      | Purified from rabbit serum by affinity chromatography |
| <b>Storage condition :</b> | Store at 2-8°C. Do not freeze.                        |

### Application Note

**Western Blotting** *Recommended dilution:* 1 µg/ml

*Positive control:* mouse spleen

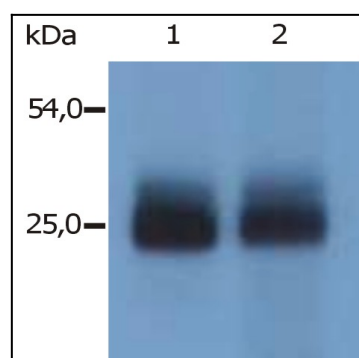


Figure 1: Western Blotting analysis (non-reducing conditions) of mouse NTAL in mouse spleen tissue. Lane 1: immunostaining with polyclonal anti-NTAL antibody (). Lane 2: immunostaining with polyclonal anti-mouse NTAL antibody (specific for N-terminal domain of mouse NTAL)