

30-1225: Anti-PAG / Cbp Monoclonal Antibody (Clone:MEM-255)

Clonality :	Monoclonal
Clone Name :	MEM-255
Application :	FACS, WB, IHC
Reactivity :	Human
Gene :	PAG1
Gene ID :	55824
Uniprot ID :	Q9NWQ8
Format :	Purified
Alternative Name :	PAG1,CBP,PAG
Isotype :	Mouse IgG2a
Immunogen Information :	Recombinant intracellular fragment (aa 97-432) of human Cbp (PAG).

Description

PAG (phosphoprotein associated with GEMs), also known as Cbp (Csk-binding protein), is a ubiquitously expressed 46 kDa transmembrane adaptor protein present in membrane rafts (glycosphingolipid-enriched microdomains), which however migrates on SDS PAGE gels anomalously as an 80 kDa molecule. Following tyrosine phosphorylation by Src family kinases, PAG binds and thereby activates the protein tyrosine kinase Csk, the major negative regulator of the Src family kinases. Signaling via the B-cell receptor in B cells or high affinity IgE receptor (FcεRI) in mast cells leads to PAG increased tyrosine phosphorylation and Csk binding, while T cell receptor signaling causes PAG dephosphorylation, loss of Csk binding and increased activation of the protein tyrosine kinase Lck.

Product Info

Amount :	0.1 mg
Purification :	Purified by protein-A affinity chromatography
Storage condition :	Store at 2-8°C. Do not freeze.

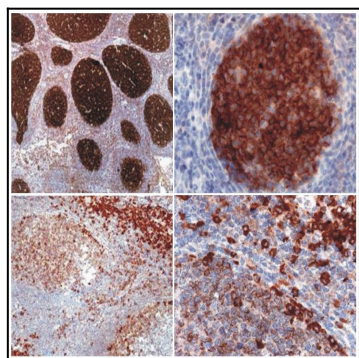


Figure 1: Immunohistochemistry staining (paraffin-embedded sections) using anti-Cbp/PAG (MEM-255). Cbp/PAG is expressed in germinal centers of lymph node lymphoid follicle and in follicular lymphoma (it is absent from mantle zone). Cbp/PAG is also expressed more weakly in T cells in tonsil and the thymic medulla.