

30-1511: Anti-PDE8a Monoclonal Antibody (Clone:EM-52)

Clonality :	Monoclonal
Clone Name :	EM-52
Application :	WB
Reactivity :	Human
Gene :	PDE8A
Gene ID :	5151
Uniprot ID :	O60658
Format :	Purified
Alternative Name :	PDE8A
Isotype :	Mouse IgG1
Immunogen Information :	Human PDE8a

Description

PDE8a (high affinity cAMP-specific and IBMX-insensitive 3',5'-cyclic phosphodiesterase 8 A) is a cyclic nucleotide phosphodiesterase, which hydrolyzes cAMP, an important regulator and mediator of multiple cellular responses to extracellular signals. It is expressed in a wide variety of tissues including testis, ovary, small intestine, and colon. It is not expressed e.g. in thymus. PDE8a is composed of C-terminal catalytic domain containing two putative divalent metal sites and an N-terminal regulatory domain.

Product Info

Amount :	0.1 mg
Purification :	Purified by protein-A affinity chromatography
Storage condition :	Store at 2-8°C. Do not freeze.

Application Note

Western blotting: Recommended dilution: 1-2 μ g/ml.

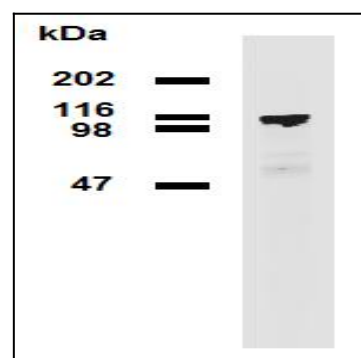


Figure 1: Western blotting analysis (reducing conditions) of PDE8a in HEK293T/17-PDE8a transfectants using mouse monoclonal antibody EM-52.