

30-2411: Anti-PLSCR1 Monoclonal Antibody (Clone:13A6 [TEC-23])

| | |
|--------------------------------|---|
| Clonality : | Monoclonal |
| Clone Name : | 13A6 [TEC-23] |
| Application : | IP, WB, FACS, ICC |
| Reactivity : | Rat |
| Gene : | Plscr1 |
| Gene ID : | 117540 |
| Uniprot ID : | P58195 |
| Format : | Ascites |
| Alternative Name : | Plscr1 |
| Isotype : | Mouse IgG2a |
| Immunogen Information : | BALB/c mice were immunized with pooled lipid rafts isolated from RBL-2H3 cells. Hybridoma cells were obtained after fusion of SP02 mouse myeloma cells with spleen cells of immunized mice using standard procedures. |

Description

PLSCR1 (Phospholipid Scramblase 1) is a multiply palmitoylated endofacial plasma membrane protein containing several SH3 and WW domain binding motives. In the plasma membrane, PLSCR1 plays a role in transbilayer lipid redistributions and signal transduction. Nonpalmitoylated PLSCR1, however, is able to be transported into the nucleus and bind DNA. PLSCR1 potentiates the antiviral activity of interferon and its expression is highly induced by interferons and growth factors.

Product Info

| | |
|----------------------------|--------------------------------|
| Amount : | 0.1 ml |
| Storage condition : | Store at 2-8°C. Do not freeze. |

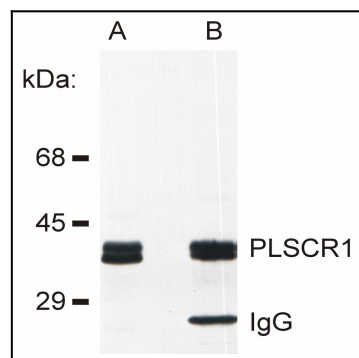


Figure 1: Detection of PLSCR1 in rat basophilic leukemia (RBL) cell line lysate (A) and in PLSCR1 immunoprecipitate from RBL lysate (B). The antibody 13A6 (Tec-23) was used both for immunoprecipitation and immunodetection.

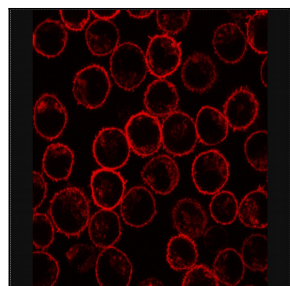


Figure 2: Immunofluorescence staining of PLSCR1 in rat basophilic leukemia (RBL) cell line using