

### 30-1275: Anti-SLP76 Monoclonal Antibody (Clone:SLP-76/03)

<b>Clonality :</b>	Monoclonal
<b>Clone Name :</b>	SLP-76/03
<b>Application :</b>	IHC, WB
<b>Reactivity :</b>	Pig, Human
<b>Gene :</b>	LCP2
<b>Gene ID :</b>	3937
<b>Uniprot ID :</b>	Q13094
<b>Format :</b>	Purified
<b>Alternative Name :</b>	LCP2
<b>Isotype :</b>	Mouse IgG2b
<b>Immunogen Information :</b>	Bacterially expressed fusion protein representing amino acids 216-434 of human SLP76 with histidine tag

#### Description

SLP76 (SH2 domain-containing leukocyte protein of 76 kDa) is a cytosolic adaptor protein which translocates to the plasma membrane and is involved in multiple signaling pathways in T cells, mast cells, neutrophils and platelets; B cells express its analog SLP65/BLNK (B cell linker protein). SLP76 is phosphorylated by Syk-family and Tec-family tyrosine kinases and couples them to the phosphorylation and activation of PLC-gamma. Via Gads or Grb2, SLP76 also associates with LAT adaptor by involvement of SLP76 proline-rich region. The SH2 domain of SLP76 has been identified as the region involved in binding the serine/threonine kinase HPK1. HPK1 may act as both a positive and a negative regulator by promoting the Jnk-mitogen activated protein kinase (MAPK) pathway and inhibiting the pathway leading to AP-1 activation.

#### Product Info

<b>Amount :</b>	0.1 mg
<b>Purification :</b>	Purified by protein-G affinity chromatography
<b>Storage condition :</b>	Store at 2-8°C. Do not freeze.

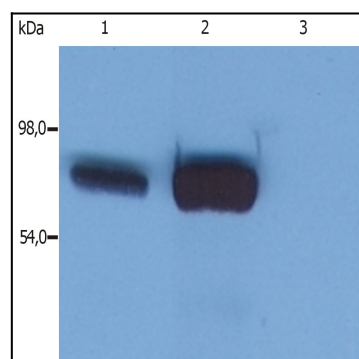


Figure 1: Western Blotting analysis (reducing conditions) of whole cell lysate using anti-SLP76 (SLP-76/03). Lane 1: HPB-ALL human peripheral blood T cell leukemia cell line. Lane 2: JURKAT human peripheral blood T cell leukemia cell line. Lane 3: RAMOS human Burkitt lymphoma cell line