

30-1283: Anti-SLP76 Polyclonal Antibody

Clonality :	Polyclonal
Application :	WB, IHC
Reactivity :	Human
Gene :	LCP2
Gene ID :	3937
Uniprot ID :	Q13094
Format :	Purified
Alternative Name :	LCP2
Isotype :	Rabbit IgG
Immunogen Information :	Bacterially expressed fusion protein representing amino acids 216-434 of human SLP76 with histidine tag

Description

SLP76 (SH2 domain-containing leukocyte protein of 76 kDa) is a cytosolic adaptor protein which translocates to the plasma membrane and is involved in multiple signaling pathways in T cells, mast cells, neutrophils and platelets; B cells express its analog SLP65/BLNK (B cell linker protein). SLP76 is phosphorylated by Syk-family and Tec-family tyrosine kinases and couples them to the phosphorylation and activation of PLC-gamma. Via Gads or Grb2, SLP76 also associates with LAT adaptor by involvement of SLP76 proline-rich region. The SH2 domain of SLP76 has been identified as the region involved in binding the serine/threonine kinase HPK1. HPK1 may act as both a positive and a negative regulator by promoting the Jnk-mitogen activated protein kinase (MAPK) pathway and inhibiting the pathway leading to AP-1 activation.

Product Info

Amount :	0.1 mg
Purification :	Purified from rabbit serum by precipitation methods
Storage condition :	Store at 2-8°C. Do not freeze.

Application Note

Immunohistochemistry *Recommended dilution:* 10 µg/ml

Positive tissue: thymus

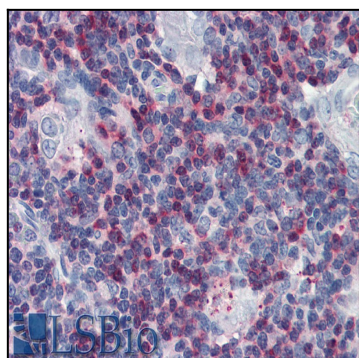


Figure 1: Immunohistochemistry staining of human thymus (paraffin sections) with anti-SLP76 polyclonal.