

### 30-1457: Anti-STRO-1 Monoclonal Antibody (Clone:STRO-1)

<b>Clonality :</b>	Monoclonal
<b>Clone Name :</b>	STRO-1
<b>Application :</b>	FACS, ICC
<b>Reactivity :</b>	Human
<b>Format :</b>	Purified
<b>Isotype :</b>	Mouse IgM
<b>Immunogen Information :</b>	Human CD34 positive bone marrow cells

#### Description

STRO-1 is a cell surface antigen expressed by stromal elements in human bone marrow, identified by monoclonal antibody STRO-1. Approximately 10% of mononuclear cells, greater than 95% of which are nucleated erythroid precursors, are STRO-1 positive, whereas the CFU-GM (colony-forming unit granulocyte-macrophage), BFU-E (erythroid burst) and CFU-Mix (mixed colonies) committed progenitor cells are negative. CFU-F (fibroblast colony-forming cells) are present exclusively in the STRO-1 positive population. When plated under long-term bone marrow culture conditions, STRO-1 positive cells generate adherent cell layers containing multiple stromal cell types, including adipocytes, smooth muscle cells, osteoblasts, chondrocytes, and fibroblastic elements. In combination with glycophorin A, STRO-1 is a useful marker for identification of mesenchymal stem cells. STRO-1 and CD117 are markers for osteosarcoma cells.

#### Product Info

<b>Amount :</b>	0.1 mg
<b>Purification :</b>	Purified by precipitation and chromatography
<b>Storage condition :</b>	Store at 2-8°C. Do not freeze.

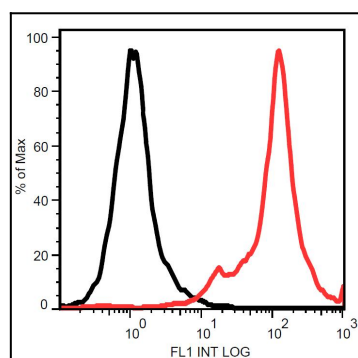


Figure 1: Surface staining of Kg1a cells with anti-STRO-1 (STRO-1) purified.