

30-1255: Anti-TCR beta (Vbeta5.3-related) Monoclonal Antibody (Clone:MEM-262)

Clonality :	Monoclonal
Clone Name :	MEM-262
Application :	FACS
Reactivity :	Human
Format :	Purified
Isotype :	Mouse IgG2a
Immunogen Information :	Human thymoma cell line HPB-ALL.

Product Info

Amount :	0.1 mg
Purification :	Purified by protein-A affinity chromatography
Storage condition :	Store at 2-8°C. Do not freeze.

Application Note

Flow Cytometry Immunoprecipitation Western Blotting Uniquely recognizes denatured TCR beta chains under the conditions of Western blotting. **Functional Application** Activates T cells (V beta 5-related subset)

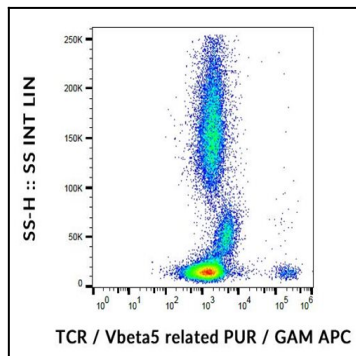


Figure 1: Flow cytometry analysis (surface staining) of human peripheral blood cells with anti-human TCR Vbeta5.3 related (MEM-262) purified, GAM/APC