

### 30-1395: Anti-Ubinuclein 1 Monoclonal Antibody (Clone:UBN1-02)

<b>Clonality :</b>	Monoclonal
<b>Clone Name :</b>	UBN1-02
<b>Application :</b>	IP, WB
<b>Reactivity :</b>	Human
<b>Gene :</b>	UBN1
<b>Gene ID :</b>	29855
<b>Uniprot ID :</b>	Q9NPG3
<b>Format :</b>	Purified
<b>Alternative Name :</b>	UBN1
<b>Isotype :</b>	Mouse IgG
<b>Immunogen Information :</b>	Recombinant protein corresponding to amino acids 1-190 of ubinuclein 1.

#### Description

Ubinuclein 1 (UBN1) is a ubiquitously expressed evolutionarily conserved protein which binds to proliferation-promoting genes that are repressed by formation of senescence-associated heterochromatin foci (SAHF). Ubinuclein 1 associates with various transcription factors and with histone methyltransferase activity, is indispensable for SAHF formation and appears to be a regulator of senescence. Although in most cells ubinuclein is localized to the nucleus, in cells forming tight junctions it is recruited to the cell adhesion complexes, dependently on the cell density.

#### Product Info

<b>Amount :</b>	0.1 mg
<b>Purification :</b>	Purified by protein-A affinity chromatography
<b>Storage condition :</b>	Store at 2-8°C. Do not freeze.

#### Application Note

**Western Blotting** *Recommended dilution:* 1-5  $\mu$ g/ml  
*Positive control:* HeLa cell line

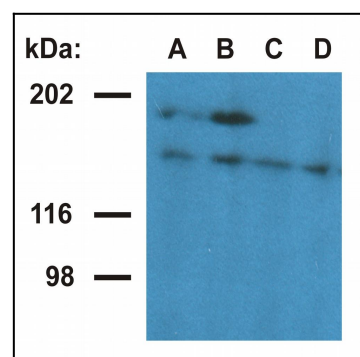


Figure 1: Western blotting analysis of ubinuclein in nuclear fraction of HeLa cells. The monoclonal antibody UBN1-01 (. Lane A, B) detects ubinuclein 1 (165 kDa) and an 180 kDa protein - presumable ubinuclein 2. The antibody UBN1-02 (. Lane C, D) detects ubinuclein 1. Antibody dilution: A, C - 1  $\mu$ g/ml; B, D - 5  $\mu$ g/ml.