

## 10-4803: Monoclonal Antibody to Mouse CD155 (Clone: 4.24)-NALE

<b>Clonality :</b>	Monoclonal
<b>Clone Name :</b>	4.24
<b>Application :</b>	Functional Assay,WB
<b>Reactivity :</b>	Mouse
<b>Gene :</b>	Pvr
<b>Uniprot ID :</b>	Q91WP1
<b>Format :</b>	Low Endotoxin
<b>Alternative Name :</b>	Poliovirus receptor
<b>Isotype :</b>	Rat IgG2a $\gamma_2$
<b>Immunogen Information :</b>	EL4 transfected with mouse CD155

### Description

Mouse CD155, is a member of a subfamily of immunoglobulin-like adhesion receptors. Mouse CD155 is expressed on a variety of cells of hematopoietic origin apart from its existence on the epithelial cells. The engagement of CD155 with CD226 and CD96 induces cytotoxicity of NK cells and CTL.

### Product Info

<b>Amount :</b>	100 $\mu$ g
<b>Purification :</b>	Protein A/G
<b>Content :</b>	This antibody is aseptically packaged and formulated in 0.01 M phosphate buffered saline (PBS) pH 7.2, 150 mM NaCl with no carrier protein, potassium or preservatives added.
<b>Storage condition :</b>	This Low Endotoxin Functional Formulation antibody is stable for at least one week when stored sterile at 2-8°C. For long term storage aseptically aliquot in working volumes without diluting and store at $\leq -80^\circ\text{C}$ . Avoid Repeated Freeze Thaw Cycles.

### Application Note

$\leq 1.0$  EU/mg as determined by the LAL method

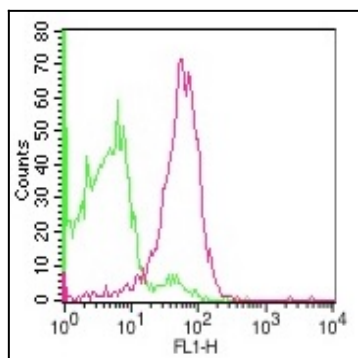


Figure-1: Cell surface flow analysis of mouse CD155 on C57 mice splenocytes using 0.5  $\mu$ g/ $10^6$  cells of CD155 antibody (Clone: 4.24). Green represents isotype control; red represents anti-mouse CD155 antibody. mouse anti-rat FITC conjugate was used as secondary antibody.