

10-7605: Mouse Monoclonal Antibody to Insulin Receptor (Clone: IR-1)

Clonality :	Monoclonal
Clone Name :	IR-1
Application :	FACS
Reactivity :	Human
Gene :	INSR
Gene ID :	3643
Uniprot ID :	P06213
Format :	Purified
Alternative Name :	CD220; HHF5; HIR A; INSR; Insulin receptor; Insulin receptor; IR
Isotype :	Mouse IgG1, kappa light chain

Description

The insulin receptor (IR) is a heterodimeric protein complex that has an intracellular subunit and an extracellular subunit, which is disulfide-linked to a transmembrane segment. The insulin ligand binds to the IR and initiates molecular signaling pathways that promote glucose uptake in cells and glycogen synthesis. Insulin binding to IR induces phosphorylation of intra-cellular tyrosine kinase domains and recruitment of multiple SH2 and SH3 domain-containing intracellular proteins that serve as signaling intermediates for pleiotropic effects of insulin. Type 1 diabetes is an auto-immune condition of the endocrine pancreas that results in destruction of insulin secreting cells and a progressive loss in insulin-sensitive glucose uptake by cells.

Product Info

Amount :	100 µg
Purification :	Protein G Chromatography
Content :	0.5µg/ml of MAb purified by Protein G. Prepared in PBS with 0.05% BSA & 0.05% azide
Storage condition :	Store at 2 to 8°C. For long term storage, store at -20 to -80°C. Antibody is stable for 24 months. Non-hazardous.

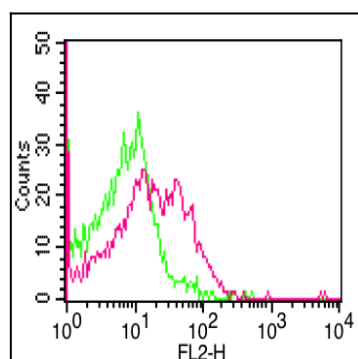


Fig 1: Cell surface staining of PBMC, lymphocytes gated. 1µg of antibody was used. Green Isotype control. Red Insulin Receptor antibody (Cat# 10-7605).

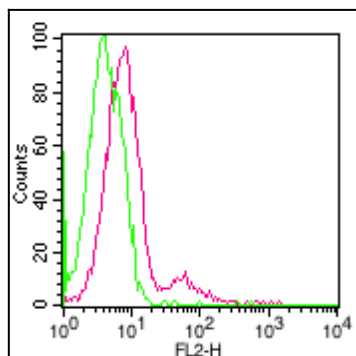


Fig 2: Cell surface staining of HepG2 cells. 2ug of antibody was used. Green Isotype control. Red Insulin Receptor antibody (Cat# 10-7605).