

10-7660: Monoclonal antibody to WT1 (Clone: 6F-H17)

Clonality :	Monoclonal
Clone Name :	6F-H17
Application :	IP,ICC,ELISA,IHC,WB,IF
Reactivity :	Human
Gene :	WT1
Gene ID :	7490
Uniprot ID :	P19544
Format :	Purified
Alternative Name :	WT33
Isotype :	Mouse IgG1
Immunogen Information :	N-terminus (amino acids 1-173) was used as the immunogen for this antibody.

Product Info

Amount :	25 µg / 100 µg
Purification :	Protein G Chromatography
Content :	25 µg in 50 µl/100 µg in 200 µl PBS containing 0.05% BSA and 0.05% sodium azide. Sodium azide is highly toxic.
Storage condition :	Store the antibody at 4°C; stable for 6 months. For long-term storage; store at -20°C. Avoid repeated freeze and thaw cycles.

Application Note

ELISA, IF, IP, WB, ICC, IHC

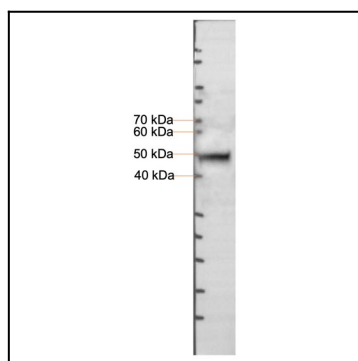


Figure 1: Western Blot analysis of human WT1 antibody Clone 6F-H17. Anti-WT1 (4ug/ml) antibody was used on Human Kidney lysate.