

## 10-1064: Monoclonal antibody to CREB1 (Clone: ABM5B73)

<b>Clonality :</b>	Monoclonal
<b>Clone Name :</b>	ABM5B73
<b>Application :</b>	WB
<b>Reactivity :</b>	Human
<b>Gene :</b>	CREB1
<b>Gene ID :</b>	1385
<b>Uniprot ID :</b>	P16220
<b>Format :</b>	Purified
<b>Alternative Name :</b>	Cyclic AMP-responsive element-binding protein 1, CREB-1
<b>Isotype :</b>	Mouse IgG1, Kappa
<b>Immunogen Information :</b>	A partial length recombinant CREB protein (amino acids 70-200) was used as the immunogen for this antibody.

### Product Info

<b>Amount :</b>	25 µg / 100 µg
<b>Purification :</b>	Protein G Chromatography
<b>Content :</b>	25 µg in 50 µl/100 µg in 200 µl PBS containing 0.05% BSA and 0.05% sodium azide. Sodium azide is highly toxic.
<b>Storage condition :</b>	Store the antibody at 4°C, stable for 6 months. For long-term storage, store at -20°C. Avoid repeated freeze and thaw cycles.

### Application Note

Recommended dilutions: WB: 1-2 µg/ml. However, this need to be optimized based on the research applications.

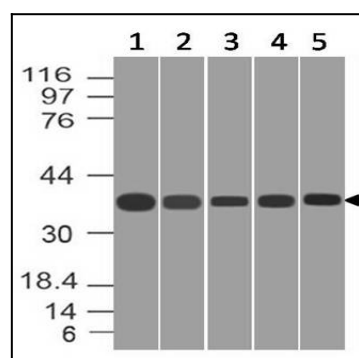


Figure-1: Western blot analysis of CREB1. Anti-CREB1 antibody (Clone:ABM5B73) was used at 1 µg/ml on (1) PC3, (2) CP70, (3) FADU, (4) A549 and (5) MCF-7 lysates.