

## 10-8023: Monoclonal antibody to BIN1 (Clone: ABM57E4)

<b>Clonality :</b>	Monoclonal
<b>Clone Name :</b>	ABM57E4
<b>Application :</b>	WB
<b>Reactivity :</b>	Human
<b>Gene :</b>	BIN1
<b>Gene ID :</b>	274
<b>Uniprot ID :</b>	O00499
<b>Format :</b>	Purified
<b>Alternative Name :</b>	Amphiphysin II, Amphiphysin-like protein, Box-dependent myc-interacting protein 1, Bridging integrator 1, AMPHL
<b>Isotype :</b>	Mouse IgG2b, Kappa
<b>Immunogen Information :</b>	A partial length recombinant protein of BIN1 (amino acid 175-400) was used as the immunogen for this antibody.

### Product Info

<b>Amount :</b>	25 µg / 100 µg
<b>Purification :</b>	Protein G Chromatography
<b>Content :</b>	25 µg in 50 µl/100 µg in 200 µl PBS containing 0.05% BSA and 0.05% sodium azide. Sodium azide is highly toxic.
<b>Storage condition :</b>	Store the antibody at 4°C, stable for 6 months. For long-term storage, store at -20°C. Avoid repeated freeze and thaw cycles.

### Application Note

Recommended dilutions: WB: 1-2 µg/ml. However, this need to be optimized based on the research applications.

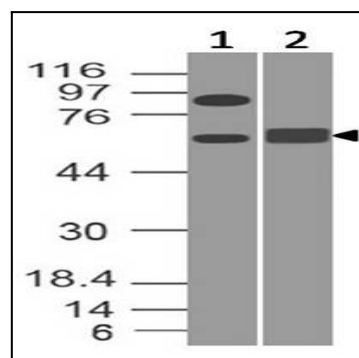


Figure-1: Western blot analysis of BIN1. Anti-BIN1 antibody (Clone: ABM57E4) was used at 1 µg/ml on (1) h Brain and (2) h SKM lysates.