

10-7554: Monoclonal Antibody to CDC25A (Clone: ABM4A46)

Clonality :	Monoclonal
Clone Name :	ABM4A46
Application :	IHC,WB
Reactivity :	Human
Gene :	CDC25A
Gene ID :	993
Uniprot ID :	P30304
Format :	Purified
Alternative Name :	CDC25A
Isotype :	Mouse IgG2b Kappa
Immunogen Information :	A partial length recombinant CDC25A protein (amino acids 190-484) was used as the immunogen for this antibody.

Description

CDC25A is a dual specificity (tyr/thr) phosphatase and a putative upregulated c-Myc target gene. It is a regulator of the cell cycle required for progression from G1 to S phase. CDC25A is a member of the CDC25 family of phosphatases. CDC25A is specifically degraded in response to DNA damage, which prevents cells with chromosomal abnormalities from progressing through cell division. Overexpression of CDC25A bypassed the mechanism of cell cycle arrest, leading to enhanced DNA damage and decreased cell survival. Specific degradation of CDC25A is identified as part of the DNA damage checkpoint mechanism and suggested how CDC25A overexpression in human cancers might contribute to tumorigenesis.

Product Info

Amount :	25 µg / 100 µg
Purification :	Protein G Chromatography
Content :	25 µg in 50 µl/100 µg in 200 µl PBS containing 0.05% BSA and 0.05% sodium azide. Sodium azide is highly toxic.
Storage condition :	Store the antibody at 4°C, stable for 6 months. For long-term storage, store at -20°C. Avoid repeated freeze and thaw cycles.

Application Note

Western blot analysis: 2-4 Åµg/ml, Immunohistochemical analysis: 5 Åµg/ml

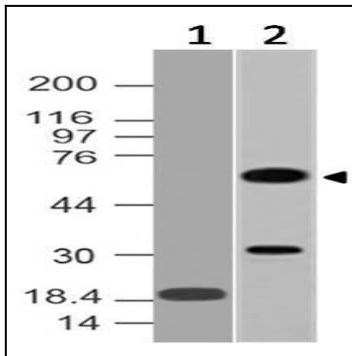


Fig-1: Western blot analysis of CDC25A. Anti-CDC25A antibody (Clone: ABM4A46) was tested at 0.5 μ g/ml and 2 μ g/ml on (1) recombinant protein and (2) human heart lysates respectively.

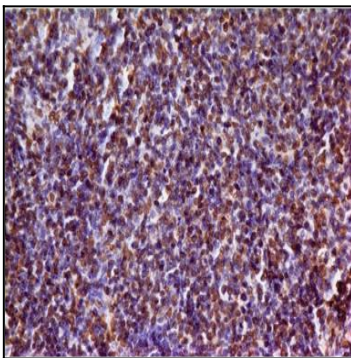


Fig-2 : Immunohistochemical analysis of CDC25A in human tonsil tissue using CDC25A antibody (Clone: ABM4A46) at 5 μ g/ml.