

## 10-1068: Monoclonal antibody to RLIP (Clone: ABM1C8.1D9)

<b>Clonality :</b>	Monoclonal
<b>Clone Name :</b>	ABM1C8.1D9
<b>Application :</b>	WB
<b>Reactivity :</b>	Human
<b>Gene :</b>	RALBP1
<b>Gene ID :</b>	10928
<b>Uniprot ID :</b>	Q15311
<b>Format :</b>	Purified
<b>Alternative Name :</b>	RalA-binding protein 1, 76 kDa Ral-interacting protein, Dinitrophenyl S-glutathione ATPase, Ral-interacting protein 1, RLIP1, RLIP76
<b>Isotype :</b>	Mouse IgG1 Kappa

### Product Info

<b>Amount :</b>	25 µg / 100 µg
<b>Purification :</b>	Protein G Chromatography
<b>Content :</b>	25 µg in 50 µl/100 µg in 200 µl PBS containing 0.05% BSA and 0.05% sodium azide. Sodium azide is highly toxic.
<b>Storage condition :</b>	Store the antibody at 4°C, stable for 6 months. For long-term storage, store at -20°C. Avoid repeated freeze and thaw cycles.

### Application Note

Recommended dilutions: WB:1-2 µg/ml. However, this need to be optimized based on the research applications.

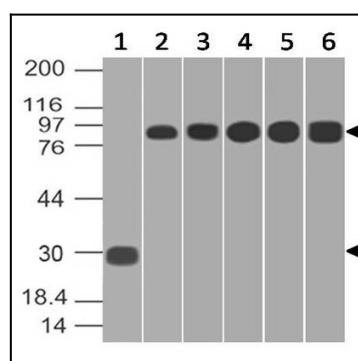


Figure-1: Western blot analysis of RLIP. Anti-RLIP antibody (Clone:ABM1C8.1D9) was used at 0.01 µg/ml on (1) Recombinant protein and at 1.0 µg/ml on (2) HT-29, (3) 293, (4) Jurkat, (5) A431 and (6) MCF-7 lysates.