

#### 44-1099: Anti-p27 Monoclonal Antibody (Clone:IHC027)(Discontinued)

<b>Clonality :</b>	Monoclonal
<b>Clone Name :</b>	IHC027
<b>Application :</b>	IHC
<b>Reactivity :</b>	Human
<b>Gene :</b>	CDKN1B
<b>Gene ID :</b>	1027
<b>Uniprot ID :</b>	P46527
<b>Format :</b>	Purified
<b>Alternative Name :</b>	KIP1, Cyclin-dependent kinase inhibitor 1B, p27Kip1

#### Description

p27, also known as p27Kip1, is a cyclin-dependent kinase inhibitor that binds to and inhibits cyclin-dependent kinases, thereby regulating progression from G1 to S phase. Decreased expression of p27 is linked to poor prognosis in renal-cell carcinoma, colon carcinoma, small breast carcinomas, non-small-cell lung carcinoma, hepatocellular carcinoma, multiple myeloma, lymph node metastases in papillary carcinoma of the thyroid, and is associated with a more aggressive phenotype of carcinoma in the cervix.

#### Product Info

<b>Amount :</b>	0.1 ml / 1 ml
<b>Purification :</b>	Protein A/G Chromatography
<b>Storage condition :</b>	Store at 2°C - 8°C.

#### Application Note

Recommended dilutions: Immunohistochemical analysis: 1:100 - 1:200. However, this need to be optimized based on the research applications.

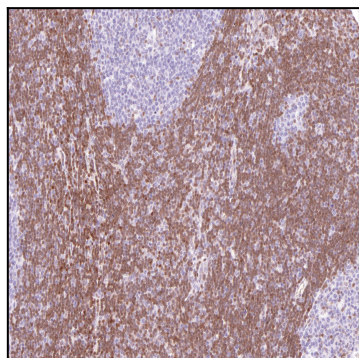


Figure 1: Immunohistochemical analysis of p27 (IHC027) on Lymph Node