

44-1117: Anti-CA-125 Monoclonal Antibody (Clone:IHC125)

Clonality :	Monoclonal
Clone Name :	IHC125
Application :	IHC
Reactivity :	Human
Gene :	CA125
Gene ID :	94025
Uniprot ID :	Q8WXI7
Format :	Purified
Alternative Name :	CA125; Cancer antigen 125; MUC16; Mucin16; Ovarian cancer-related tumor marker CA125; Ovarian carcinoma antig

Description

CA-125 is normally found in epithelial cells of Fallopian tube, endometrium and endocervix, pancreas, colon, gall bladder, stomach, kidney, apocrine sweat gland, mammary gland, and mesothelial cell lining of pleura, pericardium and the peritoneum. Staining with CA-125 reacts positively with ovarian malignancies, cervical carcinoma, endometrial and bladder adenocarcinoma, seminal vesicle carcinoma, and anaplastic lymphoma.

Product Info

Amount :	0.1 ml / 1 ml
Purification :	Protein A/G Chromatography
Storage condition :	Store at 2°C - 8°C.

Application Note

Recommended dilutions: Immunohistochemical analysis: 1:100 - 1:200. However, this need to be optimized based on the research applications.

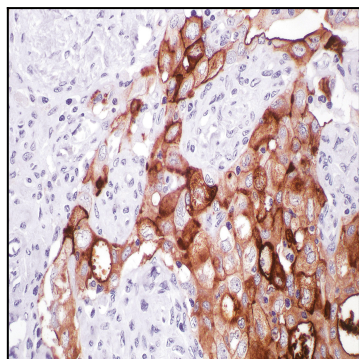


Figure 1: Immunohistochemical analysis of CA-125 (IHC125) on Ovary