

44-1119: Anti-Estrogen Receptor Monoclonal Antibody (Clone:IHC403)(Discontinued)

Clonality :	Monoclonal
Clone Name :	IHC403
Application :	IHC
Reactivity :	Human
Gene :	ESR1
Gene ID :	2099
Uniprot ID :	P03372
Format :	Purified
Alternative Name :	ESR, Å NR3A1, ESR1, ER-alpha, Estradiol receptor, Nuclear receptor subfamily 3 group A member 1

Description

Estrogen receptors (ER) are a group of nuclear hormone receptors activated by the hormone estrogen. ER is found in normal epithelial cells of the breast and endometrium, as well as in breast cancer cells.

Product Info

Amount :	0.1 ml / 1 ml
Purification :	Protein A/G Chromatography
Storage condition :	Store at 2°C - 8°C.

Application Note

Recommended dilutions: Immunohistochemical analysis: 1:100 - 1:200. However, this need to be optimized based on the research applications.

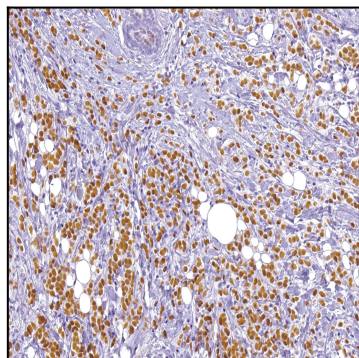


Figure 1: Immunohistochemical analysis of Estrogen Receptor (IHC403) on Breast Cancer