

## 44-1122: Anti-GLUT1 Monoclonal Antibody (Clone:IHC404)-Ready to Use

<b>Clonality :</b>	Monoclonal
<b>Clone Name :</b>	IHC404
<b>Application :</b>	IHC
<b>Reactivity :</b>	Human
<b>Gene :</b>	SLC2A1
<b>Gene ID :</b>	6513
<b>Uniprot ID :</b>	P11166
<b>Format :</b>	Predilute
<b>Alternative Name :</b>	SLC2A1, GLUT1, Solute carrier family 2, facilitated glucose transporter member 1, Glucose transporter type 1, erythrocyte/brain, HepG2 glucose transporter

### Description

Glucose transporter type I (GLUT1), also known as SCL2A1, is a glucose transporter present in the blood-brain barrier as well as erythrocytes. GLUT1 overexpression is associated with tumor progression or poor prognoses of bladder, breast, cervical, colon, and lung carcinomas, as well as mesothelioma. Anti-GLUT1 is useful for distinguishing malignant mesothelioma (GLUT1(+)) from reactive mesothelium (GLUT1(-)).

### Product Info

<b>Amount :</b>	7 ml
<b>Purification :</b>	Protein A/G Chromatography
<b>Storage condition :</b>	Store at 2°C - 8°C.

### Application Note

This product is available in ready to use format, hence no dilution is required.

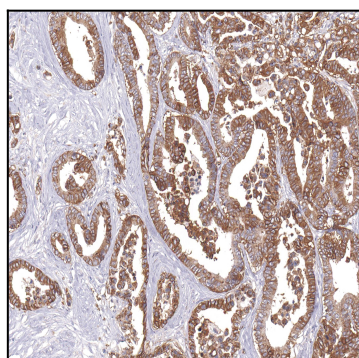


Figure 1: Immunohistochemical analysis of GLUT1 (IHC404) on Colon Cancer