

44-1135: Anti-CEA Monoclonal Antibody (Clone:IHC543)

Clonality :	Monoclonal
Clone Name :	IHC543
Application :	IHC
Reactivity :	Human
Gene :	CEACAM5
Gene ID :	1048
Uniprot ID :	P06731
Format :	Purified
Alternative Name :	Carcinoembryonic antigen, Meconium antigen 100, CD66e

Description

Carcinoembryonic antigen (CEA) describes a set of glycoposphatidyl inositol and transmembrane cell-surface-anchored glycoproteins involved in cell adhesion, differentiation, anoikis, polarization, and tissue architecture. CEA staining, along with Calretinin, CK 5/6, D2-40, HBME-1, Napsin A, MOC-31, and Ber-EP4, is used to help differentiate between adenocarcinoma and mesothelioma. Staining with Anti-CEA is also suggested to be useful in identifying the origin of metastatic adenocarcinoma. CEA is an effective marker for adenocarcinomas of the lung, colon, stomach, esophagus, pancreas, gallbladder, urachus, salivary gland, ovary, and endocervix.

Product Info

Amount :	0.1 ml / 1 ml
Purification :	Protein A/G Chromatography
Storage condition :	Store at 2°C - 8°C.

Application Note

Recommended dilutions: Immunohistochemical analysis: 1:100 - 1:200. However, this need to be optimized based on the research applications.

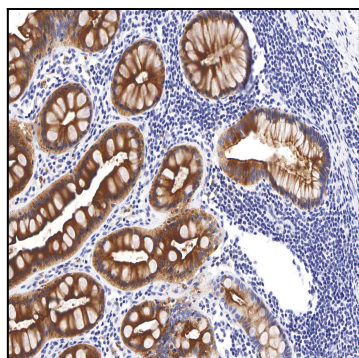


Figure 1: Immunohistochemical analysis of CEA (IHC543) on Rectum