

44-1139: Anti-DOG1 Monoclonal Antibody (Clone:IHC562)(Discontinued)

Clonality :	Monoclonal
Clone Name :	IHC562
Application :	IHC
Reactivity :	Human
Gene :	ANO1
Gene ID :	55107
Uniprot ID :	Q5XXA6
Format :	Purified
Alternative Name :	Anoctamin 1, Calcium Activated Chloride Channel, Discovered On Gastrointestinal Stromal Tumors Protein 1, TAOS2, ORAOV2, TMEM16A

Description

DOG1, also known as Discovered on GIST-1, is a marker that highly specific for gastrointestinal stromal tumor (GIST). Anti-DOG1 is extremely sensitive for the detection of GIST and its diagnosis. Although some GIST stain weakly for c-kit, DOG1 is expressed in the vast majority of GIST cases. Reports have also indicated DOG1 as a marker for salivary acinar and intercalated duct differentiation.

Product Info

Amount :	0.1 ml / 1 ml
Purification :	Protein A/G Chromatography
Storage condition :	Store at 2°C - 8°C.

Application Note

Recommended dilutions: Immunohistochemical analysis: 1:100 - 1:200. However, this need to be optimized based on the research applications.

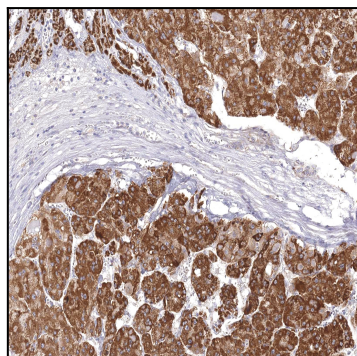


Figure 1: Immunohistochemical analysis of DOG1 (IHC562) on Liver Cancer