

44-1140: Anti-DOG1 Monoclonal Antibody (Clone:IHC562)-Ready to Use(Discontinued)

| | |
|---------------------------|--|
| Clonality : | Monoclonal |
| Clone Name : | IHC562 |
| Application : | IHC |
| Reactivity : | Human |
| Gene : | ANO1 |
| Gene ID : | 55107 |
| Uniprot ID : | Q5XXA6 |
| Format : | Predilute |
| Alternative Name : | Anoctamin 1, Calcium Activated Chloride Channel, Discovered On Gastrointestinal Stromal Tumors Protein 1, TAOS2, ORAOV2, TMEM16A |

Description

DOG1, also known as Discovered on GIST-1, is a marker that highly specific for gastrointestinal stromal tumor (GIST). Anti-DOG1 is extremely sensitive for the detection of GIST and its diagnosis. Although some GIST stain weakly for c-kit, DOG1 is expressed in the vast majority of GIST cases. Reports have also indicated DOG1 as a marker for salivary acinar and intercalated duct differentiation.

Product Info

| | |
|----------------------------|----------------------------|
| Amount : | 7 ml |
| Purification : | Protein A/G Chromatography |
| Storage condition : | Store at 2°C - 8°C. |

Application Note

This product is available in ready to use format, hence no dilution is required.

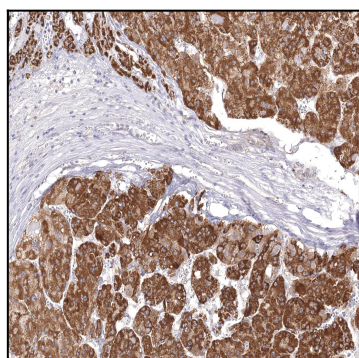


Figure 1: Immunohistochemical analysis of DOG1 (IHC562) on Liver Cancer