

44-1143: Anti-Ep-Cam Monoclonal Antibody (Clone:IHC567)

Clonality : Monoclonal

Clone Name : IHC567

Application : IHC

Reactivity : Human

Gene : EPCAM

Gene ID : 4072

Uniprot ID : P16422

Format : Purified

Alternative Name : Adenocarcinoma-associated antigen, Cell surface glycoprotein Trop-1, Epithelial cell surface antigen, Epithelial glycoprotein, Epithelial glycoprotein 314, KS 1/4 antigen, KSA, Major gastrointestinal tumor-associated protein GA733-2, Tumor-associated calcium signal transducer 1, GA733-2, M1S2, M4S1, MIC18, TACSTD1, TROP1

Description

Epithelial Cell Adhesion Molecule (EpCAM) is a transmembrane glycoprotein that mediates cell-cell adhesion in epithelia. It is normally present on most baso-lateral surfaces of normal epithelial cells and is absent in myoepithelial cells, hepatocytes, adult squamous epithelia, mesothelial cells, and fibroblasts. Anti-EpCAM stains most adenocarcinomas and neuroendocrine tumors, including small cell carcinomas. A minority of renal clear cell carcinoma, renal oncocytoma, and hepatocellular carcinoma stain positively for EpCAM, while Anti-EpCAM stains nearly all basal cell carcinoma. Anti-EpCAM stains chromophobe renal cell carcinoma, papillary renal cell carcinoma, and cholangiocarcinoma more frequently. Anti-EpCAM can be useful for distinguishing malignancy in the peritoneal and pleural cavities.

Product Info

Amount : 0.1 ml / 1 ml

Purification : Protein A/G Chromatography

Storage condition : Store at 2°C - 8°C.

Application Note

Recommended dilutions: Immunohistochemical analysis: 1:100 - 1:200. However, this need to be optimized based on the research applications.

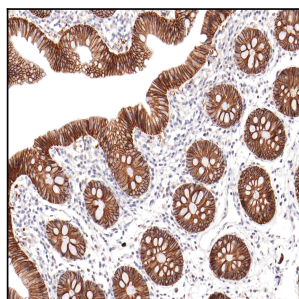


Figure 1: Immunohistochemical analysis of Ep-CAM/Epithelial Specific Antigen (IHC567) on Colon