

#### 44-1147: Anti-Fibronectin Monoclonal Antibody (Clone:IHC575)

<b>Clonality :</b>	Monoclonal
<b>Clone Name :</b>	IHC575
<b>Application :</b>	IHC
<b>Reactivity :</b>	Human
<b>Gene :</b>	FN1
<b>Gene ID :</b>	2335
<b>Uniprot ID :</b>	P02751
<b>Format :</b>	Purified
<b>Alternative Name :</b>	FN1, FN, Cold-insoluble globulin, CIG

#### Description

Fibronectin is a glycoprotein that contributes to cell adhesion, migration, and metastasis. Renal cancer cells exhibit higher expression of fibronectin, therefore Anti-Fibronectin is useful for assessing the progression and aggressiveness of renal cancer cells.

#### Product Info

<b>Amount :</b>	0.1 ml / 1 ml
<b>Purification :</b>	Protein A/G Chromatography
<b>Storage condition :</b>	Store at 2°C - 8°C.

#### Application Note

Recommended dilutions: Immunohistochemical analysis: 1:100 - 1:200. However, this need to be optimized based on the research applications.

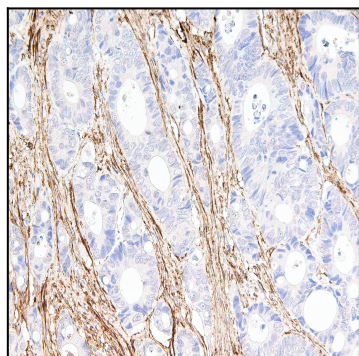


Figure 1: Immunohistochemical analysis of Fibronectin (IHC575) on Colon Cancer