

## 44-1155: Anti-hCG Monoclonal Antibody (Clone:IHC593)

**Clonality :** Monoclonal

**Clone Name :** IHC593

**Application :** IHC

**Reactivity :** Human

**Gene :** CGA

**Gene ID :** 1081

**Uniprot ID :** P01215

**Format :** Purified

**Alternative Name :** Glycoprotein hormones alpha chain, Anterior pituitary glycoprotein hormones common subunit alpha, Choriongonadotropin alpha chain, Chorionic gonadotrophin subunit alpha, CG-alpha, Follicle-stimulating hormone alpha chain, FSH-alpha, Follicitropin alpha chain, Luteinizing hormone alpha chain, LSH-alpha, Lutropin alpha chain, Thyroid-stimulating hormone alpha chain, TSH-alpha, Thyrotropin alpha chain

### Description

Human Chorionic Gonadotropin (hCG) is a glycoprotein hormone produced by the trophoblastic cells of the placenta after conception. Anti-hCG is useful for identifying trophoblastic tumors, such as choriocarcinoma. hCG is also a marker for non-trophoblastic tumors such as large cell carcinoma and lung adenocarcinoma.

### Product Info

**Amount :** 0.1 ml / 1 ml

**Purification :** Protein A/G Chromatography

**Storage condition :** Store at 2°C - 8°C.

### Application Note

Recommended dilutions: Immunohistochemical analysis: 1:100 - 1:200. However, this need to be optimized based on the research applications.

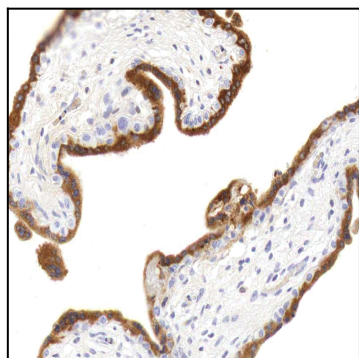


Figure 1: Immunohistochemical analysis of hCG (IHC593) on Placenta