

## 44-1168: Anti-MUC1 Monoclonal Antibody (Clone:IHC623)-Ready to Use

<b>Clonality :</b>	Monoclonal
<b>Clone Name :</b>	IHC623
<b>Application :</b>	IHC
<b>Reactivity :</b>	Human
<b>Gene :</b>	MUC1
<b>Gene ID :</b>	4582
<b>Uniprot ID :</b>	P15941
<b>Format :</b>	Predilute
<b>Alternative Name :</b>	Mucin-1, MUC-1, Breast carcinoma-associated antigen DF3, Cancer antigen 15-3, CA 15-3, Carcinoma-associated mucin, Episialin, H23AG, Krebs von den Lungen-6, KL-6, PEMT, Peanut-reactive urinary mucin, PUM, Polymorphic epithelial mucin, PEM, Tumor-associated epithelial membrane antigen, EMA, Tumor-associated mucin, CD227, Mucin-1 subunit alpha, MUC1-NT, MUC1-alpha, Mucin-1 subunit beta, MUC1-beta, MUC1-CT, MUC1, PUM

### Description

Mucin 1 (MUC1), also known as Epithelial Membrane Antigen (EMA), is a membrane-bound glycoprotein involved in a number of protective and cell-signaling functions, including cell-cell adhesion, proliferation, motility, invasion, and survival. Overexpression of MUC1 is clinically indicated in breast carcinomas, papillary thyroid carcinomas, and thymic carcinomas, and reports have named MUC1 as a useful marker for differentiating thymic carcinoma from type B3 thymoma. The expression of MUC1 is correlated with the grade of malignancy in thymic epithelial tumors, and loss of MUC1 expression has been associated with reactive gastropathy. MUC1 is not expressed in normal human epidermis, but has been detected in the epidermis of psoriatic plaques of biopsies from patients diagnosed with psoriasis vulgaris.

### Product Info

<b>Amount :</b>	7 ml / 25 ml
<b>Purification :</b>	Protein A/G Chromatography
<b>Storage condition :</b>	Store at 2°C - 8°C.

### Application Note

This product is available in ready to use format, hence no dilution is required.

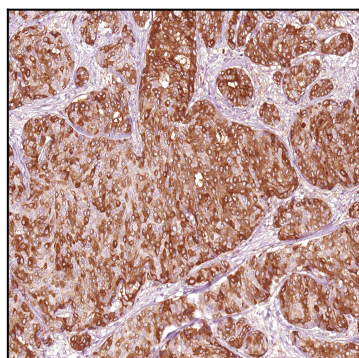


Figure 1: Immunohistochemical analysis of MUC1 (IHC623) on Breast Cancer