

44-1182: Anti-Stathmin Monoclonal Antibody (Clone:IHC667)-Ready to Use

Clonality :	Monoclonal
Clone Name :	IHC667
Application :	IHC
Reactivity :	Human
Gene :	STMN1
Gene ID :	3925
Uniprot ID :	P16949
Format :	Predilute
Alternative Name :	STMN1, C1orf215, LAP18, OP18, Metablastin, Oncoprotein 18, Prosolin, Protein Pr22, pp17

Description

Stathmin regulates microtubule dynamics in the cell cycle. It is present in all tissues, but is mostly pronounced in constantly proliferating cell types. Since Anti-Stathmin staining has been found to correlate with cervical intraepithelial neoplasia (CIN) grade, CIN 3 presents the greatest expression and CIN1 displays the least expression of stathmin.

Product Info

Amount :	7 ml
Purification :	Protein A/G Chromatography
Storage condition :	Store at 2°C - 8°C.

Application Note

This product is available in ready to use format, hence no dilution is required.

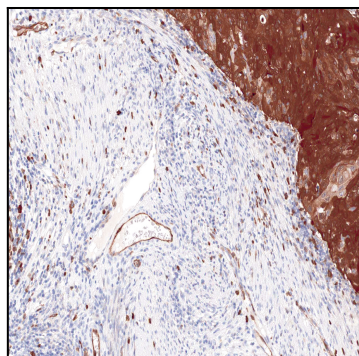


Figure 1: Immunohistochemical analysis of Stathmin (IHC667) on Cervical Cancer