

37-1029: Mouse BCAM Recombinant Protein (His Tag)(Discontinued)

Reactivity : Mouse

Alternative Name : 1200005K12Rik Protein, Mouse; B-CAM Protein, Mouse; Gplu Protein, Mouse; Lu Protein, Mouse

Description

Source : HEK293 Cells

The Lutheran (Lu) blood group and basal cell adhesion molecule (BCAM) antigens are both carried by 2 glycoprotein isoforms of the immunoglobulin superfamily representing receptors for the laminin alpha(5) chain. It is a transmembrane receptor with five immunoglobulin-like domains in its extracellular region, and is therefore classified as a member of the immunoglobulin (Ig) gene family. In addition to red blood cells, Lu/BCAM proteins are expressed in endothelial cells of vascular capillaries and in epithelial cells of several tissues. BCAM/LU has a wide tissue distribution with a predominant expression in the basal layer of the epithelium and the endothelium of blood vessel walls. As designated as CD239 recently, BCAM and LU share a significant sequence similarity with the CD146 (MUC18) and CD166, and themselves are adhesion molecules that bind laminin with high affinity. Laminins are found in all basement membranes and are involved in cell differentiation, adhesion, migration, and proliferation. BCAM is upregulated following malignant transformation of some cell types in vivo and in vitro, thus being a candidate molecule involved in tumor progression. In addition, BCAM interacts with integrin in sickle red cells, and thus may potentially play a role in vaso-occlusive episodes.

Product Info

Amount : Mouse BCAM Recombinant Protein (His Tag)(Discontinued) / 100 µg

Purification : > 98 % as determined by SDS-PAGE

Content : Formulation Lyophilized from sterile PBS, pH 7.4
Normally 5 % - 8 % trehalose, mannitol and 0.01% Tween80 are added as protectants before lyophilization.

Storage condition : Store it under sterile conditions at -20°C to -80°C. It is recommended that the protein be aliquoted for optimal storage. Avoid repeated freeze-thaw cycles.

Amino Acid : Met1-Ala541

Application Note

Measured by the ability of the immobilized protein to support the adhesion of HOS human osteogenic sarcoma cells. When cells are added to coated plates(5 µg/mL, 100µL/well), approximately 30-70% will adhere after 1 hour at 37°C.
Endotoxin < 1.0 EU per µg of the protein as determined by the LAL method

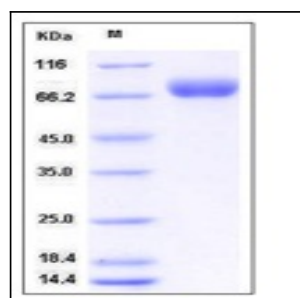


Fig 1: Mouse BCAM Recombinant Protein (His Tag)