

## 37-1047: Human 2B4 / SLAMF / CD244 Recombinant Protein (Fc Tag)(Discontinued)

**Reactivity :** Human

**Alternative Name :** 2B4 Protein, NAIL Protein, NKR2B4 Protein, Nmrk Protein, SLAMF4 Protein,

### Description

#### Source : HEK293 Cells

The CD244 antigen, also known as 2B4, is a cell surface glycoprotein implicated in the regulation of natural killer and T lymphocyte function. 2B4 is a member of the signaling lymphocyte activation molecule (SLAM)-related receptor family and is important for stimulating NK cell cytotoxicity and cytokine production, which is expressed on all NK cells, a subpopulation of T cells, monocytes and basophils. The 2B4 antigen identified on NK cells and T cells is capable of transmitting stimulatory signals and non-MHC-restricted killing. Reported as an activating receptor, human 2B4 can effectively activate and enhance NK cell-mediated cytotoxicity, induce secretion of IFN-gamma and matrix metalloproteinases (MMPs), as well as NK cell invasiveness. As a cell surface glycoprotein of the Ig-superfamily structurally related to CD2-like molecules such as CD2, CD48, CD58, CD84, Ly-9, and SLAM, 2B4 (CD244) is expressed on all human NK cells, a subpopulation of T cells, basophils and monocytes. 2B4 activates NK cell mediated cytotoxicity, induces secretion of IFN-gamma and matrix metalloproteinases, and NK cell invasiveness. Cancer Immunotherapy Co-inhibitory Immune Checkpoint Targets Immune Checkpoint Immune Checkpoint Detection: Antibodies Immune Checkpoint Detection: ELISA Antibodies Immune Checkpoint Detection: FCM Antibodies Immune Checkpoint Detection: IP Antibodies Immune Checkpoint Proteins Immune Checkpoint Targets Immunotherapy Targeted Therapy

### Product Info

<b>Amount :</b>	Human 2B4 / SLAMF / CD244 Recombinant Protein (Fc Tag)(Discontinued) / 100 µg
<b>Purification :</b>	> 97 % as determined by SDS-PAGE
<b>Content :</b>	Formulation Lyophilized from sterile PBS, pH 7.4 Normally 5 % - 8 % trehalose, mannitol and 0.01% Tween80 are added as protectants before lyophilization.
<b>Storage condition :</b>	Store it under sterile conditions at -20°C to -80°C. It is recommended that the protein be aliquoted for optimal storage. Avoid repeated freeze-thaw cycles.
<b>Amino Acid :</b>	Met1-Arg221

### Application Note

1. Measured by its binding ability in a functional ELISA. Immobilized human CD48 at 10 µg/ml (100 µL/well) can bind recombinant human 2B4 / CD244 with a linear range of 0.004-0.4 µg/ml. 2. Measured by its ability to bind biotinylated mouse CD48 in a functional ELISA.

Endotoxin :< 1.0 EU per µg of the protein as determined by the LAL method

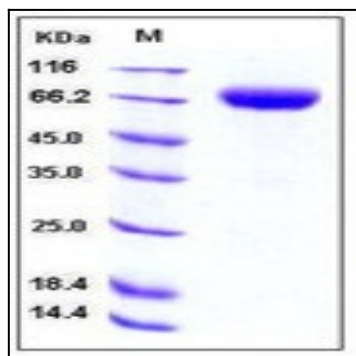


Fig 1: Human 2B4 / SLAMF / CD244 Recombinant Protein (Fc Tag)