

## 37-1051: Human ANPEP / CD13 Recombinant Protein (603 Met/Ile, His Tag)(Discontinued)

**Reactivity :** Human

**Alternative Name :** APN Protein, CD13 Protein, GP150 Protein, LAP1 Protein, P150 Protein, PEPN Protein,

### Description

#### Source : HEK293 Cells

Aminopeptidase N (ANPEP or APN), also known as CD13, is a cell-surface metalloprotease located in the small-intestinal and renal microvillar membrane, as well as other plasma membranes. It belongs to the peptidase M1 family. CD13 plays a role in the final digestion of peptides generated from hydrolysis of proteins by gastric and pancreatic proteases and is involved in the metabolism of regulatory peptides by diverse cell types. CD13/APN is a potent regulator of angiogenesis which is essential for tumor invasion and metastasis, and its transcription in activated endothelial cells is induced by angiogenic growth factors via the RAS/MAPK pathway. In addition, this enzyme has been shown to participate in antigen processing and presentation, and accordingly, defects in this gene appear to be a cause of various types of leukemia or lymphoma and carcinomas.

### Product Info

**Amount :** Human ANPEP / CD13 Recombinant Protein (603 Met/Ile, His Tag)(Discontinued) / 20 µg

**Purification :** > 97 % as determined by SDS-PAGE

**Content :** Formulation Lyophilized from sterile PBS, pH 7.3  
Normally 5 % - 8 % trehalose, mannitol and 0.01% Tween80 are added as protectants before lyophilization.

**Storage condition :** Store it under sterile conditions at -20°C to -80°C. It is recommended that the protein be aliquoted for optimal storage. Avoid repeated freeze-thaw cycles.

**Amino Acid :** Lys69-Lys967,603Met/Ile

### Application Note

Measured by its ability to cleave the fluorogenic peptide substrate, Ala-7-amido-4-methylcoumarin (Ala-AMC) . The specific activity is >2,500 pmoles/min/µg.

Endotoxin :< 1.0 EU per µg of the protein as determined by the LAL method.

Other pack size also available.

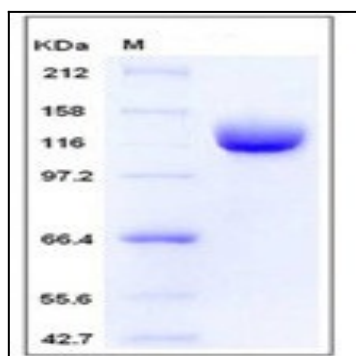


Fig 1: Human ANPEP / CD13 Recombinant Protein (603 Met/Ile, His Tag)