

## 37-1069: Human VCAM-1 / CD106 Recombinant Protein (Fc Tag)(Discontinued)

**Reactivity :** Human

**Alternative Name :** CD106 Protein, INCAM-100 Protein, VCAM-1 Protein,

### Description

#### Source : HEK293 Cells

Vascular cell adhesion molecule 1 (VCAM-1), also known as CD16, is a cell surface sialoglycoprotein belonging to the immunoglobulin superfamily. Two forms of VCAM-1 with either six or seven extracellular Ig-like domains are generated by alternative splicing, with the longer form predominant. VCAM-1 is an endothelial ligand for very late antigen-4 (VLA-4) and alpha4β7 integrin expressed on leukocytes, and thus mediates leukocyte-endothelial cell adhesion and signal transduction. VCAM-1 expression is induced on endothelial cells during inflammatory bowel disease, atherosclerosis, allograft rejection, infection, and asthmatic responses. During these responses, VCAM-1 forms a scaffold for leukocyte migration. VCAM-1 also activates signals within endothelial cells resulting in the opening of an "endothelial cell gate" through which leukocytes migrate. VCAM-1 has been identified as a potential anti-inflammatory therapeutic target, the hypothesis being that reduced expression of VCAM-1 will slow the development of atherosclerosis. In addition, VCAM-1-activated signals in endothelial cells are regulated by cytokines indicating that it is important to consider both endothelial cell adhesion molecule expression and function during inflammatory processes. Cancer Immunotherapy Immune Checkpoint Immunotherapy Targeted Therapy

### Product Info

<b>Amount :</b>	1 / CD106 Recombinant Protein (Fc Tag)(Discontinued) / 200 µg
<b>Purification :</b>	> 95 % as determined by SDS-PAGE
<b>Content :</b>	Formulation Lyophilized from sterile 100mM Glycine, 10mM NaCl, 50mM Tris, pH 7.5 Normally 5 % - 8 % trehalose, mannitol and 0.01% Tween80 are added as protectants before lyophilization.
<b>Storage condition :</b>	Store it under sterile conditions at -20°C to -80°C. It is recommended that the protein be aliquoted for optimal storage. Avoid repeated freeze-thaw cycles.
<b>Amino Acid :</b>	Met1-Pro697

### Application Note

Measured by the ability of the immobilized protein to support the adhesion of U937 human histiocytic lymphoma cells. When cells are added to VCAM1 coated plates (10 µg/mL, 100 µL/well) approximately > 70% cells will adhere after 1 hour of incubation at 37°C.

Endotoxin :< 1.0 EU per µg of the protein as determined by the LAL method

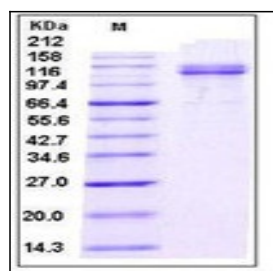


Fig 1: Human VCAM-1 / CD106 Recombinant Protein (Fc Tag)