

37-1073: Human CCL2 / MCP-1 / MCP1 Recombinant Protein (His Tag)(Discontinued)

Reactivity : Human

Alternative Name : GDCF-2 Protein, HC11 Protein, HSMCR30 Protein, MCAF Protein, MCP-1 Protein, MCP1 Protein, SCYA2 Protein, SMC-CF Protein,

Description

Source : Yeast

Monocyte chemoattractant protein 1 (MCP-1), also called CCL2, belongs to a group of CC chemokines located in chromosome 17q11.2. MCP-1 protein interacts with chemokine C-C motif receptor 2 (CCR2) to activate and recruit monocytes, macrophages, CD4+ T cells and immature dendritic cells to the site of infection [7Å-9]. The presence of MCP-1 protein in an adequate concentration is important for granuloma formation and M. tuberculosis clearance. Cancer Immunotherapy Immune Checkpoint Immunotherapy Targeted Therapy

Product Info

Amount : 1 / MCP1 Recombinant Protein (His Tag)(Discontinued) / 50 µg

Purification : > 95 % as determined by SDS-PAGE.

Content : Formulation Lyophilized from sterile PBS, pH 7.4.
Normally 5 % - 8 % trehalose, mannitol and 0.01% Tween80 are added as protectants before lyophilization.

Storage condition : Store it under sterile conditions at -20°C to -80°C. It is recommended that the protein be aliquoted for optimal storage. Avoid repeated freeze-thaw cycles.

Amino Acid : Gln24-Thr99

Application Note

Other pack size also available

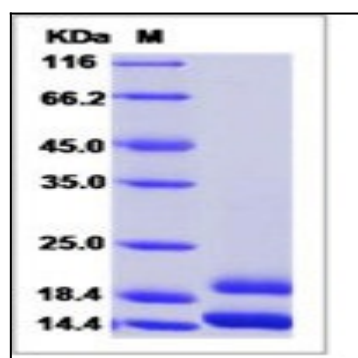


Fig 1: Human CCL2 / MCP-1 / MCP1 Recombinant Protein (His Tag)