

## 37-1076: Human CD31 / PECAM1 Recombinant Protein (Fc Tag)(Discontinued)

<b>Reactivity :</b>	Human
<b>Alternative Name :</b>	CD31 Protein, CD31/EndoCAM Protein, endoCAM Protein, GPIIb Protein, PECA1 Protein, PECAM-1 Protein,

### Description

#### Source : HEK293 Cells

The Cluster of Differentiation 31 (CD31) adhesion molecule, also known as platelet-endothelial cell adhesion molecule-1 (PECAM-1), is the only known member of the CAM family on platelets. CD31 protein is a 13-kDa transmembrane glycoprotein expressed by endothelial cells, platelets, monocytes, neutrophils, and certain T cell subsets. CD31 protein is also expressed in certain tumors, including epithelioid hemangioendothelioma, other vascular tumors, and histiocytic malignancies. CD31 plays a key role in removing aged neutrophils and tissue regeneration. CD31 protein mediates the homotypic or heterotypic cell adhesion by binding to itself or the leukocyte integrin  $\alpha_v\beta_3$ , and thus plays a role in neutrophil recruitment in inflammatory responses, transendothelial migration of leukocytes, as well as in cardiovascular development.

### Product Info

<b>Amount :</b>	Human CD31 / PECAM1 Recombinant Protein (Fc Tag)(Discontinued) / 200 $\mu$ g
<b>Purification :</b>	> 95 % as determined by SDS-PAGE
<b>Content :</b>	Formulation Lyophilized from sterile 100mM Glycine, 10mM NaCl, 50mM Tris, pH 7.5 Normally 5 % - 8 % trehalose, mannitol and 0.01% Tween80 are added as protectants before lyophilization.
<b>Storage condition :</b>	Store it under sterile conditions at -20°C to -80°C. It is recommended that the protein be aliquoted for optimal storage. Avoid repeated freeze-thaw cycles.
<b>Amino Acid :</b>	Met1-Lys601

### Application Note

Measured by the ability of the immobilized protein to support the adhesion of Jurkat human acute T cell leukemia cells. When  $8 \times 10^4$  cells/well are added to sCD31-Fc coated plates (1.25 $\mu$ g/mL, 100 $\mu$ L/well) in the presence of 20ng/mL PMA, approximately 20-45% will adhere after 30 minutes at 37°C.  
Endotoxin :< 1.0 EU per  $\mu$ g of the protein as determined by the LAL method

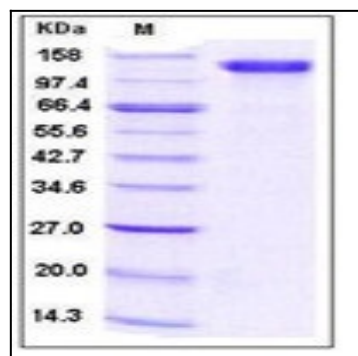


Fig 1: Human CD31 / PECAM1 Recombinant Protein (Fc Tag)