

## 37-1088: Human S100A4 Recombinant Protein (Fc Tag)(Discontinued)

**Reactivity :** Human

**Alternative Name :** 18A2 Protein, 42A Protein, CAPL Protein, FSP1 Protein, MTS1 Protein, P9KA Protein, PEL98 Protein,

### Description

#### Source : HEK293 Cells

S1A4, also known as metastasis-associated protein Mtsl, belongs to the family of small calcium-binding S1 proteins containing two EF-hand calcium-binding motifs. In humans at least 2 S1 family members that are distributed tissue specifically have been identified, and are involved in a number of cellular processes as transducers of calcium signal. S1A4 is a symmetric homodimer, and undergoes a relatively large conformational change upon the typical EF-hand binding calcium, which is necessary for S1A4 to interact with its protein targets and generate biological effects. It can bind the already known targets p53, F-actin, liprin beta, myosin heavy chain II, and prevent their phosphorylation and multimerization. It has been demonstrated that S1A4 is directly involved in tumor metastasis including cell motility, invasion, apoptosis, angiogenesis and differentiation, and appears to be a metastasis factor and a molecular marker for clinical prognosis. Multiple alternatively spliced variants encoding the same protein have been identified.

### Product Info

**Amount :** Human S100A4 Recombinant Protein (Fc Tag)(Discontinued) / 100 µg

**Purification :** > 95 % as determined by SDS-PAGE

**Content :** Formulation Lyophilized from sterile PBS, pH 7.4  
Normally 5 % - 8 % trehalose, mannitol and 0.01% Tween80 are added as protectants before lyophilization.

**Storage condition :** Store it under sterile conditions at -20°C to -80°C. It is recommended that the protein be aliquoted for optimal storage. Avoid repeated freeze-thaw cycles.

**Amino Acid :** Met1-Lys101

### Application Note

Endotoxin :< 1.0 EU per µg of the protein as determined by the LAL method

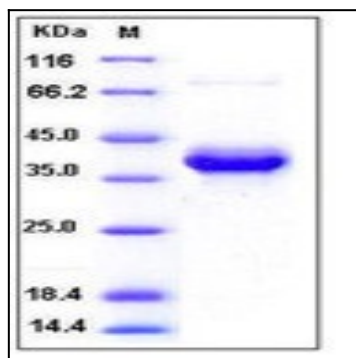


Fig 1: Human S100A4 Recombinant Protein (Fc Tag)