

## 37-1116: Human XCL1 Recombinant Protein (His Tag)(Discontinued)

**Reactivity :** Human

**Alternative Name :** ATAC Protein, LPTN Protein, LTN Protein, SCM-1 Protein, SCM-1a Protein, SCM1 Protein, SCM1A Protein, SCYC1 Protein,

### Description

#### Source : Baculovirus-Insect Cells

This antimicrobial gene encodes a member of the chemokine superfamily. Chemokines function in inflammatory and immunological responses, inducing leukocyte migration and activation. The encoded protein is a member of the C-chemokine subfamily, retaining only two of four cysteines conserved in other chemokines, and is thought to be specifically chemotactic for T cells. This gene and a closely related family member are located on the long arm of chromosome 1. Cancer Immunotherapy Immune Checkpoint Immunotherapy Targeted Therapy

### Product Info

**Amount :** Human XCL1 Recombinant Protein (His Tag)(Discontinued) / 50 µg

**Purification :** > 85 % as determined by SDS-PAGE

**Content :** Formulation Lyophilized from sterile PBS, pH 7.4  
Normally 5 % - 8 % trehalose, mannitol and 0.01% Tween80 are added as protectants before lyophilization.

**Storage condition :** Store it under sterile conditions at -20°C to -80°C. It is recommended that the protein be aliquoted for optimal storage. Avoid repeated freeze-thaw cycles.

**Amino Acid :** Met1-Gly114

### Application Note

Endotoxin : < 1.0 EU per µg of the protein as determined by the LAL method.  
Other pack size also available.

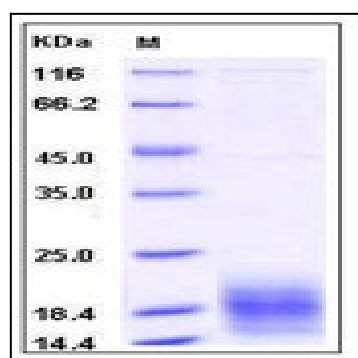


Fig 1: Human XCL1 Recombinant Protein (His Tag)