

## 37-1141: Human CD160 Recombinant Protein (His Tag)(Discontinued)

**Reactivity :** Human

**Alternative Name :** BY55 Protein, NK1 Protein, NK28 Protein,

### Description

#### Source : HEK293 Cells

CD16 antigen, also known as Natural killer cell receptor BY55 and CD16, is a cell membrane protein which contains one Ig-like V-type (immunoglobulin-like) domain. CD16 is a GPI-anchored lymphocyte surface receptor in which expression is mostly restricted to the highly cytotoxic CD56(dim)CD16(+) peripheral blood NK subset. CD16 is a receptor showing broad specificity for both classical and non-classical MHC class I molecules. CD16 is expressed in spleen, peripheral blood, and small intestine. Expression of CD16 is restricted to functional NK and T cytotoxic lymphocytes. CD16 acts as a co-activator receptor for CD3-induced proliferation of CD4+ CD16+ T cells isolated from inflammatory skin lesions. Unique CD4+ CD16+ lymphocyte subset may play a role in the pathogenesis of skin inflammation. Activated NK lymphocytes release a soluble form of CD16 that functionally impairs the MHC-I-specific cytotoxic CD8(+) T lymphocyte responsiveness. Cancer Immunotherapy Co-inhibitory Immune Checkpoint Targets Immune Checkpoint Immune Checkpoint Detection: Antibodies Immune Checkpoint Detection: ELISA Antibodies Immune Checkpoint Detection: FCM Antibodies Immune Checkpoint Detection: IHC Antibodies Immune Checkpoint Targets Immunotherapy Targeted Therapy

### Product Info

**Amount :** Human CD160 Recombinant Protein (His Tag)(Discontinued) / 100 µg

**Purification :** > 90 % as determined by SDS-PAGE

**Content :** Formulation Lyophilized from sterile PBS, pH 7.4  
Normally 5 % - 8 % trehalose, mannitol and 0.01% Tween80 are added as protectants before lyophilization.

**Storage condition :** Store it under sterile conditions at -20°C to -80°C. It is recommended that the protein be aliquoted for optimal storage. Avoid repeated freeze-thaw cycles.

**Amino Acid :** Met1-Leu158

### Application Note

Measured by its ability to bind with biotinylated human HVEM-Fch in a functional ELISA.  
Endotoxin :< 1.0 EU per µg of the protein as determined by the LAL method

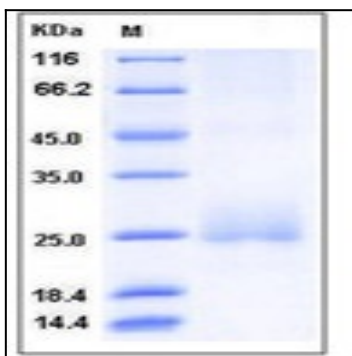


Fig 1: Human CD160 Recombinant Protein (His Tag)