

37-1165: Mouse Galectin-1 / LGALS1 Recombinant Protein(Discontinued)

Reactivity : Mouse

Alternative Name : AA410090 Protein, Mouse; Gal-1 Protein, Mouse; Galbp Protein, Mouse; galectin-1 Protein, Mouse; L-14.5 Protein, Mouse; L14 Protein, Mouse; Lect14 Protein, Mouse

Description

Source : E. coli

Galectin-1 (Gal-1, GAL1), is a member of the galectins, a family of animal lectins ranging from *Caenorhabditis elegans* to humans, which is defined by their affinity for beta-galactosides and by significant sequence similarity in the carbohydrate-binding site. It is a homodimer with a subunit molecular mass of 14.5 kDa, which contains six cysteine residues per subunit. The cysteine residues should be in a free state in order to maintain a molecular structure that is capable of showing lectin activity. This endogenous lectin widely expressed at sites of inflammation and tumour growth, has been postulated as an attractive immunosuppressive agent to restore immune cell tolerance and homeostasis in autoimmune and inflammatory settings. On the other hand, galectin-1 contributes to different steps of tumour progression including cell adhesion, migration and tumour-immune escape, suggesting that blockade of galectin-1 might result in therapeutic benefits in cancer. Several potential glycoprotein ligands for galectin-1 have been identified, including lysosome-associated membrane glycoproteins and fibronectin, laminin, as well as T-cell glycoproteins CD43 and CD45. Evidence points to Gal-1 and its ligands as one of the master regulators of such immune responses as T-cell homeostasis and survival, T-cell immune disorders, inflammation and allergies as well as host-pathogen interactions.

Product Info

Amount : 1 / LGALS1 Recombinant Protein(Discontinued) / 20 µg

Purification : > 95 % as determined by SDS-PAGE

Content : Formulation Lyophilized from sterile PBS, pH 7.4
Normally 5 % - 8 % trehalose, mannitol and 0.01% Tween80 are added as protectants before lyophilization.

Storage condition : Store it under sterile conditions at -20°C to -80°C. It is recommended that the protein be aliquoted for optimal storage. Avoid repeated freeze-thaw cycles.

Amino Acid : Met1-Glu135

Application Note

Measured by its ability to agglutinate human red blood cells. The ED50 for this effect is typically 1-5 Åµg/ml. Other pack size also available.

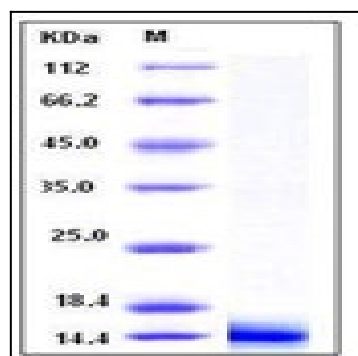


Fig 1: Mouse Galectin-1 / LGALS1 Recombinant Protein