

## 37-1167: Mouse CD28 Recombinant Protein (His Tag)(Discontinued)

**Reactivity :** Mouse

**Alternative Name :** none

### Description

#### Source : HEK293 Cells

CD28 (Cluster of Differentiation 28) is a disulphide-bonded glycoprotein belonging to the immunoglobulin (Ig) superfamily, and structurally consists of a single Ig V-like extracellular domain, a transmembrane domain and an intracellular domain. Mouse CD28 is constitutively expressed on the surface of all murine T cells and on developing thymocytes as disulfide-linked homodimers or as monomers. CD28 can binds the B7-1 and B7-2 ligand, and together perform important functions in the T and B cell response pathways. B7/CD28 family members, which can augment or antagonize T-cell receptor signaling, in the regulation of central and peripheral T-cell tolerance. CD28 is thus involved in T-cell activation, the induction of cell proliferation and cytokine production and promotion of T-cell survival. Cancer Immunotherapy Co-stimulatory Immune Checkpoint Targets Immune Checkpoint Immune Checkpoint Detection: Antibodies Immune Checkpoint Detection: ELISA Antibodies Immune Checkpoint Detection: FCM Antibodies Immune Checkpoint Detection: IHC Antibodies Immune Checkpoint Detection: WB Antibodies Immune Checkpoint Targets Immunotherapy Targeted Therapy

### Product Info

**Amount :** Mouse CD28 Recombinant Protein (His Tag)(Discontinued) / 200 µg

**Purification :** > 95 % as determined by SDS-PAGE

**Content :** Formulation Lyophilized from sterile PBS, pH 7.4  
Normally 5 % - 8 % trehalose, mannitol and 0.01% Tween80 are added as protectants before lyophilization.

**Storage condition :** Store it under sterile conditions at -20°C to -80°C. It is recommended that the protein be aliquoted for optimal storage. Avoid repeated freeze-thaw cycles.

**Amino Acid :** Met1-Lys149

### Application Note

Endotoxin : < 1.0 EU per µg of the protein as determined by the LAL method

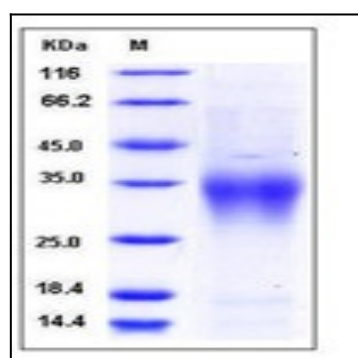


Fig 1: Mouse CD28 Recombinant Protein (His Tag)