

37-1183: Mouse CD2 / LY37 Recombinant Protein (His Tag)(Discontinued)

Reactivity : Mouse

Alternative Name : LFA-2 Protein, Mouse; Ly-37 Protein, Mouse; Ly37 Protein, Mouse

Description

Source : HEK293 Cells

T-cell surface antigen CD2, also known as T-cell surface antigen T11/Leu-5, and SRBC, is a single-pass type I membrane protein. It contains one Ig-like C2-type domain and one Ig-like V-type domain. CD2 is a cell adhesion molecule expressed on T cells and is recognized as a target for CD48 (rats) and CD58 (humans). CD2 has been shown to set quantitative thresholds in T cell activation both in vivo and in vitro. Further, intracellular CD2 signaling pathways and networks are being discovered by the identification of several cytosolic tail binding proteins. CD2 interacts with lymphocyte function-associated antigen (LFA-3) and CD48/BCM1 to mediate adhesion between T-cells and other cell types. CD2 is implicated in the triggering of T-cells, the cytoplasmic domain of CD2 is implicated in the signaling function. The complex of CD2 and CD58 also plays an important role in enhancing the adhesion of T lymphocytes to target cells, and promoting hyperplasia and activation of T lymphocytes. As a cell surface glycoprotein, CD2 expressed on most human T cells and natural killer (NK) cells and plays an important role in mediating cell adhesion in both T-lymphocytes and in signal transduction. Cancer Immunotherapy Immune Checkpoint Immunotherapy Targeted Therapy

Product Info

Amount : Mouse CD2 / LY37 Recombinant Protein (His Tag)(Discontinued) / 50 µg

Purification : > 98 % as determined by SDS-PAGE

Content : Formulation Lyophilized from sterile PBS, pH 7.4
Normally 5 % - 8 % trehalose, mannitol and 0.01% Tween80 are added as protectants before lyophilization.

Storage condition : Store it under sterile conditions at -20°C to -80°C. It is recommended that the protein be aliquoted for optimal storage. Avoid repeated freeze-thaw cycles.

Amino Acid : Met1-Ser203

Application Note

Endotoxin :< 1.0 EU per µg of the protein as determined by the LAL method

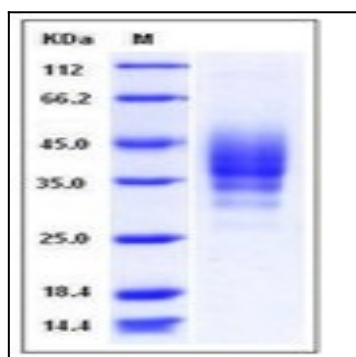


Fig 1: Mouse CD2 / LY37 Recombinant Protein (His Tag)