

## 37-1196: Mouse GM-CSF / CSF2 Recombinant Protein(Discontinued)

**Reactivity :** Mouse

**Alternative Name :** Csfgm Protein, Mouse; Gm-CSf Protein, Mouse; GMCSF Protein, Mouse; MGI-IGM Protein, Mouse

### Description

#### Source : HEK293 Cells

Granulocyte-macrophage colony-stimulating factor (GM-CSF) is one of an array of cytokines with pivotal roles in embryo implantation and subsequent development. Several cell lineages in the reproductive tract and gestational tissues synthesise GM-CSF under direction by ovarian steroid hormones and signalling agents originating in male seminal fluid and the conceptus. The pre-implantation embryo, invading placental trophoblast cells and the abundant populations of leukocytes controlling maternal immune tolerance are all subject to GM-CSF regulation. GM-CSF stimulates the differentiation of hematopoietic progenitors to monocytes and neutrophils, and reduces the risk for febrile neutropenia in cancer patients. GM-CSF also has been shown to induce the differentiation of myeloid dendritic cells (DCs) that promote the development of T-helper type 1 (cellular) immune responses in cognate T cells. The active form of the protein is found extracellularly as a homodimer, and the encoding gene is localized to a related gene cluster at chromosome region 5q31 which is known to be associated with 5q-syndrome and acute myelogenous leukemia. As a part of the immune/inflammatory cascade, GM-CSF promotes Th1 biased immune response, angiogenesis, allergic inflammation, and the development of autoimmunity, and thus worthy of consideration for therapeutic target. GM-CSF has been utilized in the clinical management of multiple disease processes. Most recently, GM-CSF has been incorporated into the treatment of malignancies as a sole therapy, as well as a vaccine adjuvant. While the benefits of GM-CSF in this arena have been promising, recent reports have suggested the potential for GM-CSF to induce immune suppression and, thus, negatively impact outcomes in the management of cancer patients. GM-CSF deficiency in pregnancy adversely impacts fetal and placental development, as well as progeny viability and growth after birth, highlighting this cytokine as a central maternal determinant of pregnancy outcome with clinical relevance in human fertility. Cancer Immunotherapy Immune Checkpoint Immunotherapy Targeted Therapy

### Product Info

**Amount :** CSF / CSF2 Recombinant Protein(Discontinued) / 50 µg

**Purification :** > 95 % as determined by SDS-PAGE

**Content :** Formulation Lyophilized from sterile PBS, pH 7.4.  
Normally 5 % - 8 % trehalose, mannitol and 0.01% Tween80 are added as protectants before lyophilization.

**Storage condition :** Store it under sterile conditions at -20°C to -80°C. It is recommended that the protein be aliquoted for optimal storage. Avoid repeated freeze-thaw cycles.

**Amino Acid :** Met1-Lys141

### Application Note

Measured in a cell proliferation assay using FDC-P1 cells. The ED50 for this effect is typically 0.012-0.047 ng/mL.  
Endotoxin : < 1.0 EU per µg of the protein as determined by the LAL method.  
Other pack size also available.

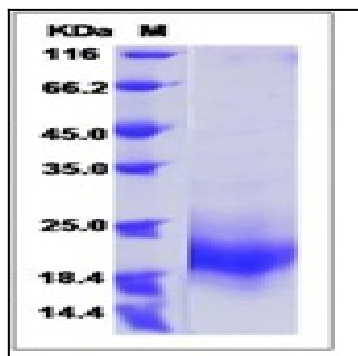


Fig 1: Mouse GM-CSF / CSF2 Recombinant Protein

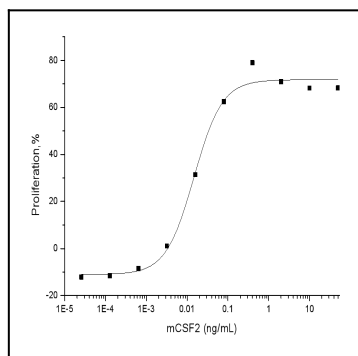


Fig 2: Mouse GM-CSF / CSF2 Recombinant Protein measured in a cell proliferation assay using FDC-P1 cells.