

## 37-1222: Human PD1 / PDCD1 / CD279 Recombinant Protein (Fc Tag)(Discontinued)

**Reactivity :** Human

**Alternative Name :** CD279 Protein, hPD-1 Protein, hPD-I Protein, hSLE1 Protein, PD-1 Protein, PD1 Protein, SLEB2 Protein,

### Description

#### Source : HEK293 Cells

Programmed cell death 1, also known as PDCD1, is a type I transmembrane glycoprotein, and is an immunoreceptor belonging to the CD28/CTLA-4 family negatively regulates antigen receptor signaling by recruiting protein tyrosine phosphatase, SHP-2 upon interacting with either of two ligands, PD-L1 or PD-L2. PD1 inhibits the T-cell proliferation and production of related cytokines including IL-1, IL-4, IL-1 and IFN-gamma by suppressing the activation and transduction of PI3K/AKT pathway. In addition, coligation of PD1 inhibits BCR-mediating signal by dephosphorylating key signal transducer. PD1 has been suggested to be involved in lymphocyte clonal selection and peripheral tolerance, and thus contributes to the prevention of autoimmune diseases. Furthermore, PD1 is shown to be a regulator of virus-specific CD8+ T cell survival in HIV infection. As a cell surface molecule, PDCD1 regulates the adaptive immune response. Engagement of PD-1 by its ligands PD-L1 or PD-L2 transduces a signal that inhibits T-cell proliferation, cytokine production, and cytolytic function. Cancer Immunotherapy Co-inhibitory Immune Checkpoint Targets Immune Checkpoint Immune Checkpoint Blockade: Blocking Antibodi Immune Checkpoint Blockade: PD1 / PDCD1 / CD2 Immune Checkpoint Detection: Antibodies Immune Checkpoint Detection: ELISA Antibodies Immune Checkpoint Detection: IHC Antibodies Immune Checkpoint Detection: WB Antibodies Immune Checkpoint Proteins Immune Checkpoint Targets Immunotherapy PD1 / PDCD1 / CD279 Immune Checkpoint PD1 / PDCD1 / CD279 Immune Checkpoint Antibod PD1 / PDCD1 / CD279 Immune Checkpoint Protein Targeted Therapy

### Product Info

**Amount :** Human PD1 / PDCD1 / CD279 Recombinant Protein (Fc Tag)(Discontinued) / 200 µg

**Purification :** > 95 % as determined by SDS-PAGE.

Formulation Lyophilized from sterile PBS, pH 7.4.

**Content :** Normally 5 % - 8 % trehalose, mannitol and 0.01% Tween80 are added as protectants before lyophilization.

**Storage condition :** Store it under sterile conditions at -20°C to -80°C. It is recommended that the protein be aliquoted for optimal storage. Avoid repeated freeze-thaw cycles.

**Amino Acid :** Met1-Gln167

### Application Note

1.Measured by its binding ability in a functional ELISA. 2.Immobilized human B7-H1-His at 10<sup>5</sup> µg/mL (100<sup>5</sup> µL/well) can bind human PDCD1-Fc the EC50 of human PDCD1-Fc is 0.1-0.4<sup>5</sup> µg/mL.

Endotoxin :< 1.0 EU per <sup>5</sup> µg protein as determined by the LAL method.

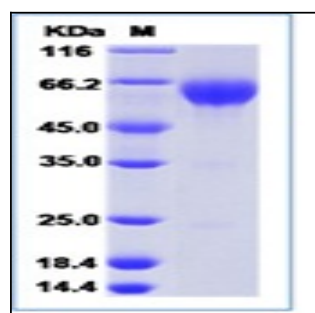


Fig 1: Human PD1 / PDCD1 / CD279 Recombinant Protein (Fc Tag)