

37-1232: Human CCL18 / PARC / MIP4 Recombinant Protein (His Tag)(Discontinued)

Reactivity : Human

Alternative Name : AMAC-1 Protein, AMAC1 Protein, CCL18 Protein, CKb7 Protein, DC-CK1 Protein, DCCCK1 Protein, MIP-4 Protein, MIP4 Protein, PARC Protein, SCYA18 Protein,

Description

Source : Yeast

CCL18 is a chemotactic cytokine involved in the pathogenesis and progression of various disorders, including cancer. Proof showed high levels of CCL18 in the serum of epithelial ovarian carcinoma patients suggesting its potential as a circulating biomarker. CCL18 chemokine has an important role in chemokine-mediated tumor metastasis, and may serve as a potential predictor for poor survival outcomes for ovarian cancer. (CCL18) is predominantly secreted by M2-tumor associated macrophages (TAMs) and promotes malignant behaviors of various human cancer types. CCL18 has a correlation with cardiac function in patients with AAMI and it might be considered as an indicator of poor LVEF in patients with AAMI. Circulating and WAT-secreted CCL18 correlates with insulin resistance and metabolic risk score. Because CCL18 is macrophage-specific and associates with adipose immune gene expression, it may constitute a marker of WAT inflammation. Macrophages are thought to be the main source of CCL18, and the effect of pirfenidone, an anti-fibrotic agent for idiopathic pulmonary fibrosis, on the expression of CCL18 in macrophages warrants investigation.

Product Info

Amount : Human CCL18 / PARC / MIP4 Recombinant Protein (His Tag)(Discontinued) / 20 µg

Purification : > 95 % as determined by SDS-PAGE

Content : Formulation Lyophilized from sterile PBS, pH 7.4.
Normally 5 % - 8 % trehalose, mannitol and 0.01% Tween80 are added as protectants before lyophilization.

Storage condition : Store it under sterile conditions at -20°C to -80°C. It is recommended that the protein be aliquoted for optimal storage. Avoid repeated freeze-thaw cycles.

Amino Acid : Ala21-Ala89

Application Note

Other pack size also available

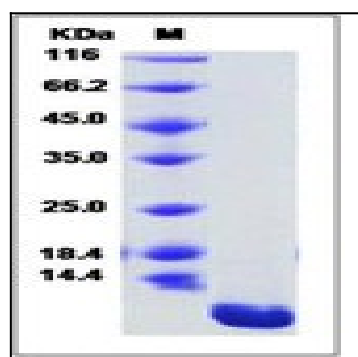


Fig 1: Human CCL18 / PARC / MIP4 Recombinant Protein (His Tag)