

37-1234: Human PDGFRB Recombinant Protein (Fc Tag)(Discontinued)

Reactivity :	Human
Alternative Name :	CD140B Protein, IBGC4 Protein, IMF1 Protein, JTK12 Protein, KOGS Protein, PDGFR Protein, PDGFR-1 Protein, PDGFR1 Protein, PENTT Protein,

Description

Source : HEK293 Cells

The cluster of differentiation (CD) system is commonly used as cell markers in immunophenotyping. Different kinds of cells in the immune system can be identified through the surface CD molecules which associating with the immune function of the cell. There are more than 32 CD unique clusters and subclusters have been identified. Some of the CD molecules serve as receptors or ligands important to the cell through initiating a signal cascade which then alter the behavior of the cell. Some CD proteins do not take part in cell signal process but have other functions such as cell adhesion. CD14b, also known as PDGFRB, is a member of the CD system. CD14b is a cell surface tyrosine kinase receptor essential for development interacting with the platelet-derived growth factors (PDGFs) which serves as mitogens for mesenchymal cells. CD14b can bind with platelet-derived growth factor (PDGF)-B, that are secreted by tumors and phosphorylation of PDGFR-beta was correlated with depth of cancer invasion at statistically significant level. Cancer Immunotherapy Immune Checkpoint Immunotherapy Targeted Therapy

Product Info

Amount :	Human PDGFRB Recombinant Protein (Fc Tag)(Discontinued) / 200 µg
Purification :	> 95 % as determined by SDS-PAGE.
Content :	Formulation Lyophilized from sterile PBS, pH 7.4. Normally 5 % - 8 % trehalose, mannitol and 0.01% Tween80 are added as protectants before lyophilization.
Storage condition :	Store it under sterile conditions at -20°C to -80°C. It is recommended that the protein be aliquoted for optimal storage. Avoid repeated freeze-thaw cycles.
Amino Acid :	Met1-Phe530

Application Note

Endotoxin :< 1.0 EU per µg protein as determined by the LAL method.

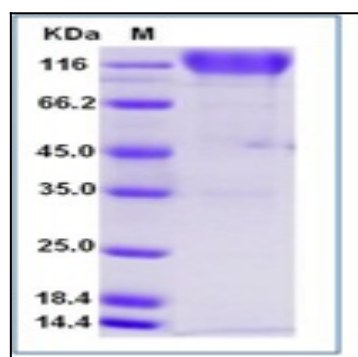


Fig 1: Human PDGFRB Recombinant Protein (Fc Tag)