

## 37-1246: Human CDK2 / p33 Recombinant Protein (His Tag)(Discontinued)

**Reactivity :** Human

**Alternative Name :** CDKN2 Protein, p33(CDK2) Protein,

### Description

#### Source : Baculovirus-Insect Cells

CDK2 is a member of the Ser/Thr protein kinase family. This protein kinase is highly similar to the gene products of *S. cerevisiae* cdc28, and *S. pombe* cdc2. It is a catalytic subunit of the cyclin-dependent protein kinase complex, whose activity is restricted to the G1-S phase, and essential for cell cycle G1/S phase transition. Cdks (cyclin-dependent kinases) are heteromeric serine/threonine kinases that control progression through the cell cycle in concert with their regulatory subunits, the cyclins. Cdks are constitutively expressed and are regulated by several kinases and phosphatases, including Wee1, CDK-activating kinase and Cdc25 phosphatase. Although there are 12 different cdk genes, only 5 have been shown to directly drive the cell cycle (Cdk1, -2, -3, -4, and -6). Following extracellular mitogenic stimuli, cyclin D gene expression is upregulated. Cdk4 forms a complex with cyclin D and phosphorylates Rb protein, leading to liberation of the transcription factor E2F. E2F induces transcription of genes including cyclins A and E, DNA polymerase and thymidine kinase. Cdk4-cyclin E complexes form and initiate G1/S transition. Subsequently, Cdk1-cyclin B complexes form and induce G2/M phase transition. Cdk1-cyclin B activation induces the breakdown of the nuclear envelope and the initiation of mitosis. CDK2 associates with and regulated by the regulatory subunits of the complex including cyclin A or E, CDK inhibitor p21Cip1 (CDKN1A) and p27Kip1 (CDKN1B). Its activity is also regulated by its protein phosphorylation. CDK2 is involved in the control of the cell cycle. It also interacts with cyclins A, B1, B3, D, or E. Activity of CDK2 is maximal during S phase and G2.

### Product Info

**Amount :** 50 µg

**Purification :** > 85 % as determined by SDS-PAGE

**Content :** Formulation Lyophilized from sterile 50mM Tris, 100mM NaCl, pH 8.0, 10% glycerol  
Normally 5 % - 8 % trehalose, mannitol and 0.01% Tween80 are added as protectants before lyophilization.

**Storage condition :** Store it under sterile conditions at -20°C to -80°C. It is recommended that the protein be aliquoted for optimal storage. Avoid repeated freeze-thaw cycles.

**Amino Acid :** Met1-Leu298

### Application Note

Endotoxin : < 1.0 EU per µg of the protein as determined by the LAL method

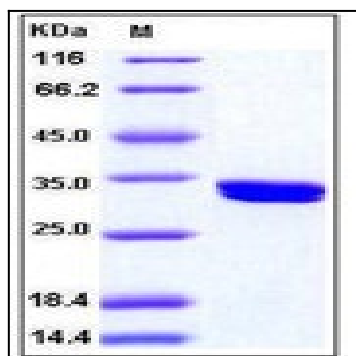


Fig 1: Human CDK2 / p33 Recombinant Protein (His Tag)