

37-1259: Human CD48 / SLAMF2 / BCM1 Recombinant Protein (His Tag)(Discontinued)

Reactivity : Human

Alternative Name : BCM1 Protein, BLAST Protein, Blast-1 Protein, BLAST1 Protein, hCD48 Protein, mCD48 Protein, MEM-102 Protein, SLAMF2 Protein,

Description

Source : HEK293 Cells

Cluster of Differentiation 48 (CD48), also known as SLAMF2, BCM-1 and BLAST-1, is a GPI-linked protein belonging to the CD2 subfamily of immunoglobulin superfamily molecules. CD2 and 2B4 (CD244) are known ligands for CD48. CD48 protein is expressed on most lineage-committed hematopoietic cells but not on hematopoietic stem cells or multipotent hematopoietic progenitors. CD48 protein performs biological functions in a variety of processes including adhesion, pathogen recognition, cellular activation, and cytokine regulation, and emerges as a critical effector molecule in immune responses. Cancer Immunotherapy Co-inhibitory Immune Checkpoint Targets Immune Checkpoint Immune Checkpoint Detection: Antibodies Immune Checkpoint Detection: ELISA Antibodies Immune Checkpoint Detection: FCM Antibodies Immune Checkpoint Detection: ICC Antibodies Immune Checkpoint Detection: IHC Antibodies Immune Checkpoint Detection: IP Antibodies Immune Checkpoint Detection: WB Antibodies Immune Checkpoint Proteins Immune Checkpoint Targets Immunotherapy Targeted Therapy

Product Info

Amount : Human CD48 / SLAMF2 / BCM1 Recombinant Protein (His Tag)(Discontinued) / 100 µg

Purification : > 95 % as determined by SDS-PAGE

Content : Formulation Lyophilized from sterile PBS, pH 7.4
Normally 5 % - 8 % trehalose, mannitol and 0.01% Tween80 are added as protectants before lyophilization.

Storage condition : Store it under sterile conditions at -20°C to -80°C. It is recommended that the protein be aliquoted for optimal storage. Avoid repeated freeze-thaw cycles.

Amino Acid : Met1-Ser220

Application Note

Measured by its binding ability in a functional ELISA . Immobilized human CD48 at 10 µg/ml (100 µL/well) can bind recombinant human 2B4 / CD244 with a linear range of 0.004-0.4 µg/ml.

Endotoxin :< 1.0 EU per µg of the protein as determined by the LAL method

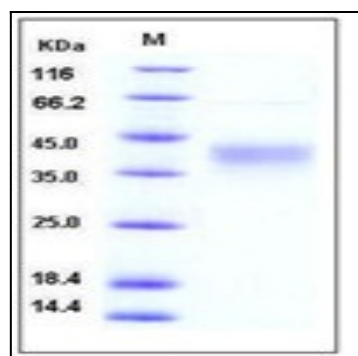


Fig 1: Human CD48 / SLAMF2 / BCM1 Recombinant Protein (His Tag)